



VIBRATION ANALYSIS HARDWARE

Product Manual
MNX10041 / REV A
MODEL CF-EMPP



EMPP

Contents

Section I

Overview

Introduction.....	2
Description.....	2

Section II

Installation

Assembling the CF-EMPP Connector.....	3
---------------------------------------	---

Section III

Operation

Operating Procedure.....	4
--------------------------	---

Section IV

Maintenance

General.....	4
Warranty.....	4

Figures

Figure 1 (Wires).....	3
Figure 2 (Assembly).....	3
Figure 3 (Epoxy).....	3
Figure 4 (Epoxy Hardening).....	3
Figure 5 (Protective Cover).....	4

Section I

Overview

Introduction

This document contains information on the operation, installation and maintenance of the CF-EMPP Field Installable kit.

Description

The CF-EMPP BNC connector is a field installable BNC connector with a protector to help shield the connector from harsh environments.

Section II Installation

Assembling the CF-EMPP Connector:

1. Strip wires $\frac{3}{4}$ in. to 1in. long as shown on right. This allows the wires and their connections with the BNC Jack to remain inside the Cord Grip.
2. Unscrew the nut off the cord grip and feed the cable through the center of the cord grip as shown. This will allow you to screw the cord grip onto the BNC Jack. Check that the length of the stripped wire doesn't show past the end of the cord grip.
3. Solder the red wire to the center prong. Solder the black wire and shield drain to the flat prong of the BNC Jack. For easier soldering the flat prong can be bent away from the center prong. On the outer rim of the BNC, apply silicone to seal the BNC onto the cord grip. **Note: Cut heat shrink to appropriate length to cover red wire solder joint to center prong.**

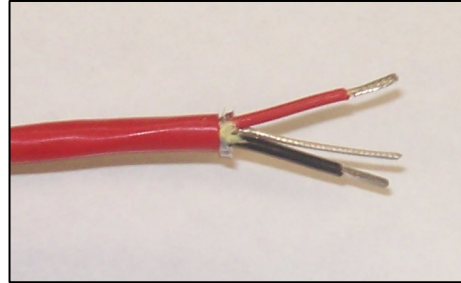


Figure 1 - Wires

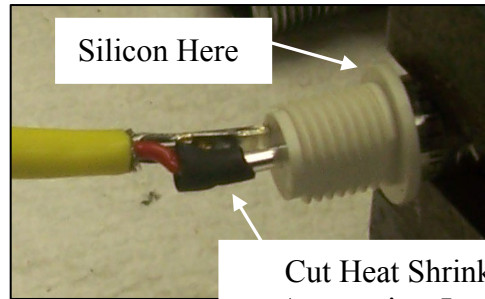
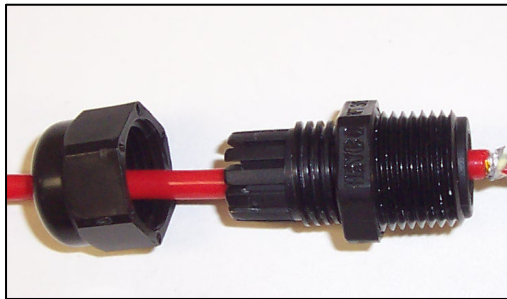


Figure 2 - Assembly

4. Fix the Cord Grip so that the cable is up and the BNC Jack is down. Move cord to the side and fill with epoxy.
5. Screw the nut back onto the Cord Grip immediately after applying the epoxy. Let epoxy harden overnight.

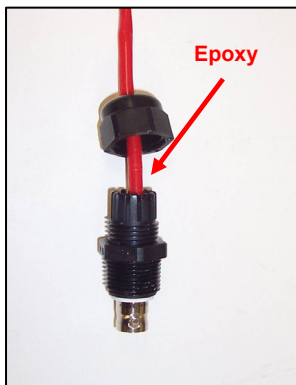


Figure 3 - Epoxy



Figure 4 - Epoxy Hardening

Section III Operation

Assembled connectors, after adhesive cures, can be attached as normal. The protective cover can be screwed onto the assembled connector as shown.

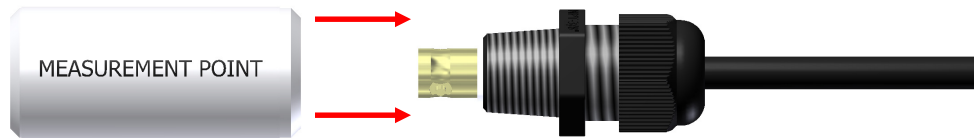


Figure 5 – Protective Cover

Section IV Maintenance

General

There are no customer replaceable parts. The product has been designed for trouble-free service under normal operating conditions.

Warranty

If any CTC vibration analysis hardware product should ever fail, we will repair or replace it at no charge.

CONTACT INFORMATION:

Connection Technology Center, Inc (CTC)
7939 Rae Blvd.
Victor, NY 14564

1-800-999-5290 (US & Canada) 1-585-924-5900 (International)
sales@ctconline.com – www.ctconline.com