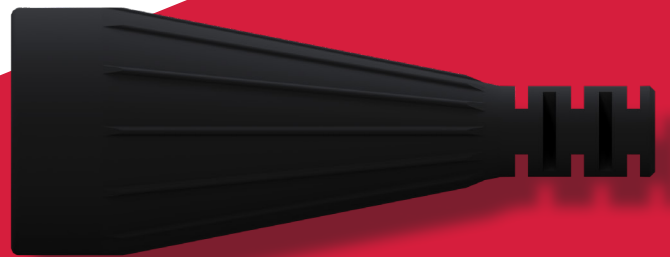
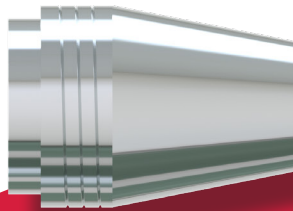
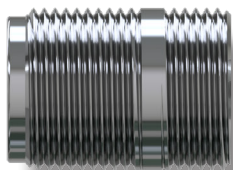
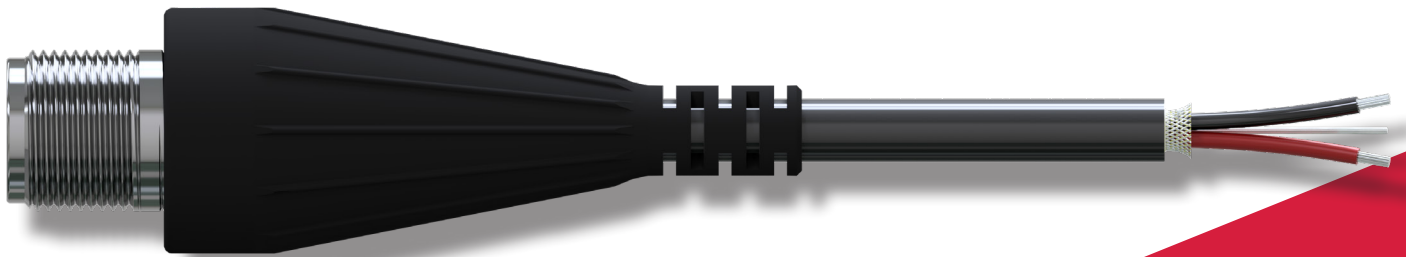




VIBRATION ANALYSIS HARDWARE



2 Pin MIL-Style Connector Kits  
with Strain Relief  
Product Manual

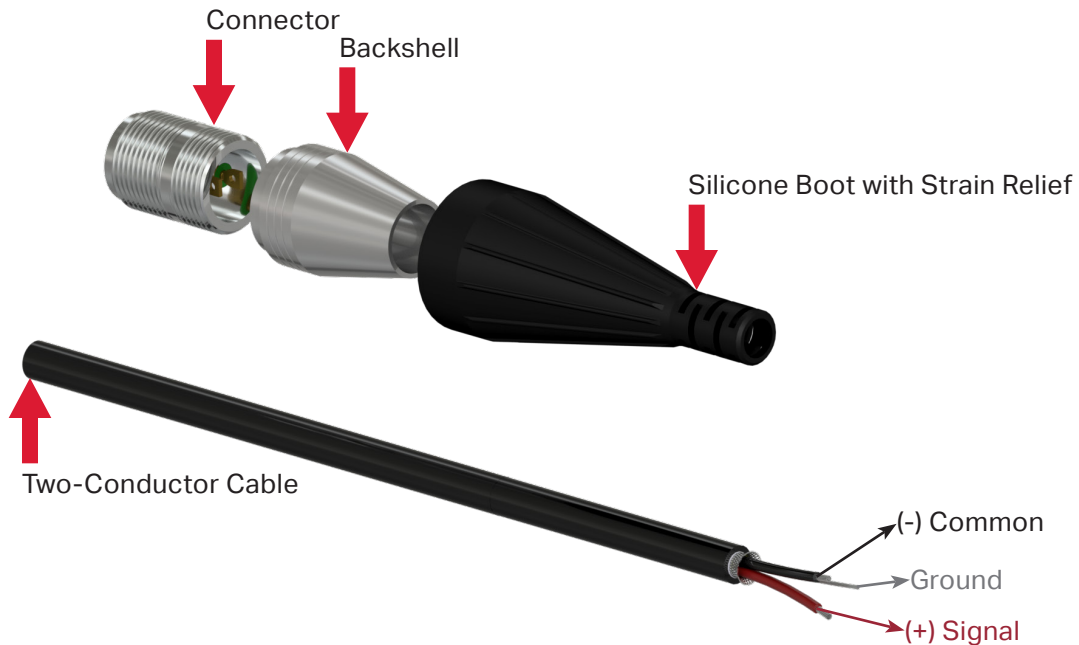
## TABLE OF CONTENTS

- Introduction.....3
- Assembly .....4
- Maintenance .....5
- Warranty & Return Information .....5

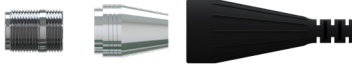


## INTRODUCTION

This document contains information on the operation, installation and maintenance of the CK-R2C Series connectors. This manual is an overview of the system and references the specific component manuals. User manuals are provided with the system for all configurable internal components.



**Figure 1. 2-Socket Connector Kit Materials**

Part #	Connector Kit Parts	Material (Backshell)	Max Temp.	Connector Kit Parts #	Compatible Cables
R2C	 CK-R2C	Stainless Steel	250 °F (121 °C)	CK-R2C-250	CB103 CB124 CB190 CB193 CB802 CB806 CB810 CB811

**Table 1. Product Selection Guide**



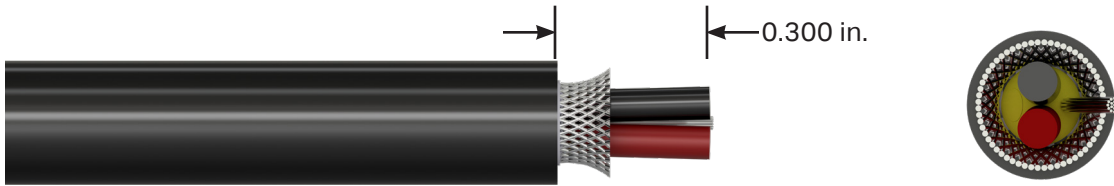
Recommended Tool: CB926-1A



Recommended Epoxy: MH109-3D

# ASSEMBLY

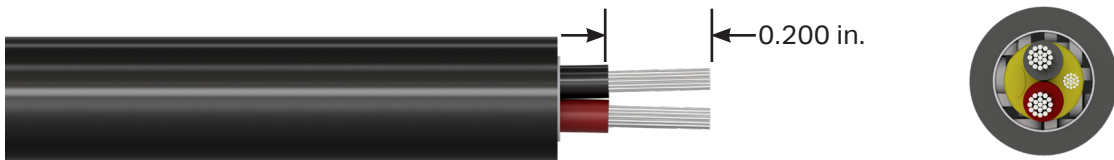
1. Strip outer jacket of wire .300".



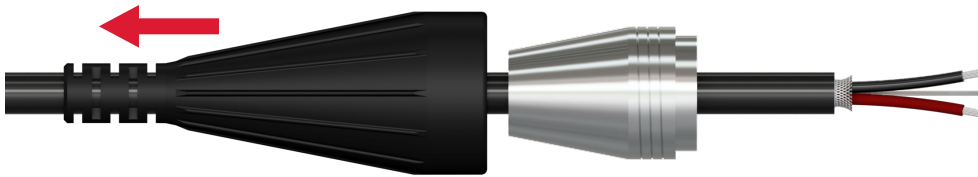
2. Cut off shield and drain wire (for twisted shielded pair wires only).



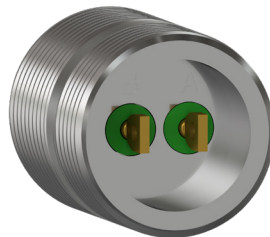
3. Strip the insulation of two conductor wires back .200".



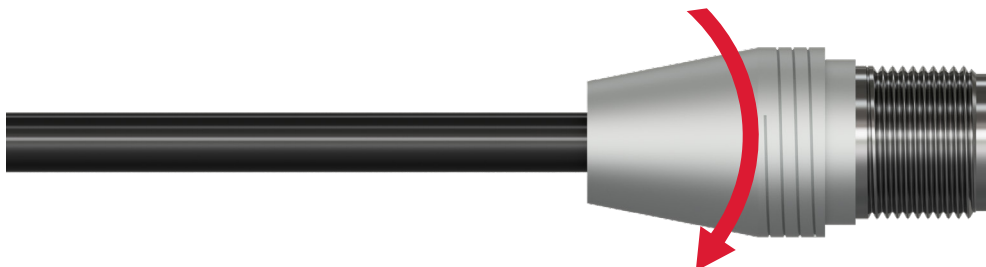
4. Slide boot and backshell onto the cable.



5. Solder sensor red (+) wire to solder cup for Pin A.  
Solder sensor black (-) wire to solder cup for Pin B.



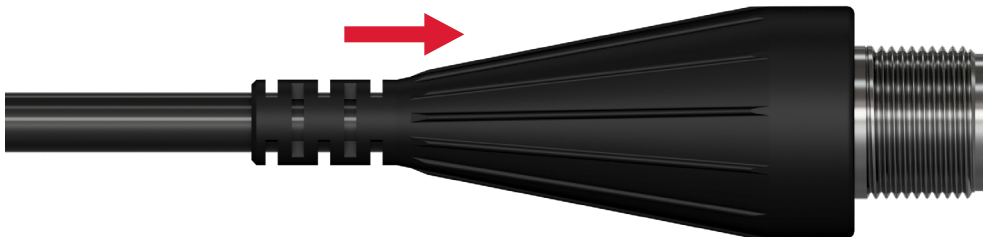
6. Thread backshell onto connector.



7. Fill the opening of the backshell with epoxy.



8. Allow to dry in the vertical position and refill the backshell as the epoxy settles after 1½ hours.
9. After 3 hours push the silicone boot shell over the assembled connector body until it snaps into place. The boot should be flush with the backshell when properly installed.



## **MAINTENANCE**

Once the product has been installed, minimal maintenance will be required. Basic visual checks to ensure integrity should be made periodically.

### **General**

There are no customer-replaceable parts. The product has been designed for trouble-free service under normal operating conditions.

## **WARRANTY & REFUND**

Please visit [www.ctconline.com](http://www.ctconline.com) to view a complete recapitulation of our warranty and refund policies.

## **CONTACT INFORMATION**

Connection Technology Center, Inc. (CTC)

7939 Rae Blvd.

Victor, NY 14564

1.585.924.5900

[sales@ctconline.com](mailto:sales@ctconline.com)

[www.ctconline.com](http://www.ctconline.com)

