



DM92000 Series
Product Manual

TABLE OF CONTENTS:

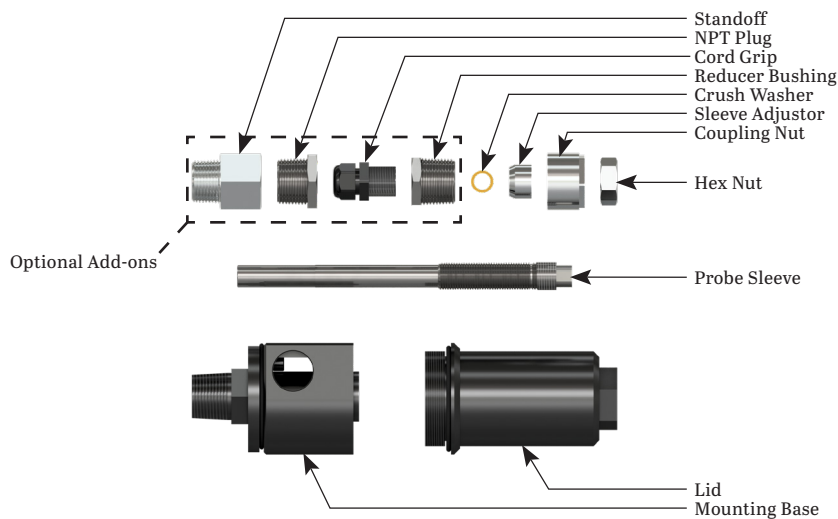
- Introduction.....3
- Product Description.....3
- Product Dimensions.....3
- Mounting Instructions.....4
- Operation Instructions6
- Warranty and Return Information8

INTRODUCTION

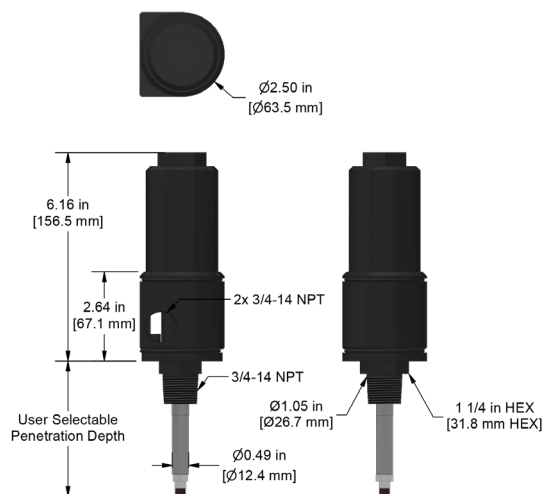
DM92000 reverse mount proximity probe housing assembly is designed to protect important proximity probe instruments in harsh manufacturing conditions and easily adjust the gap between the machine shaft and probe without shutting down a machine.

PRODUCT DESCRIPTION

The DM92000 assembly has an aluminum body and seal with Viton® O-rings. The 316L stainless steel adjustable probe mounting sleeve is specifically designed to hold up against extremely harsh industrial environments.

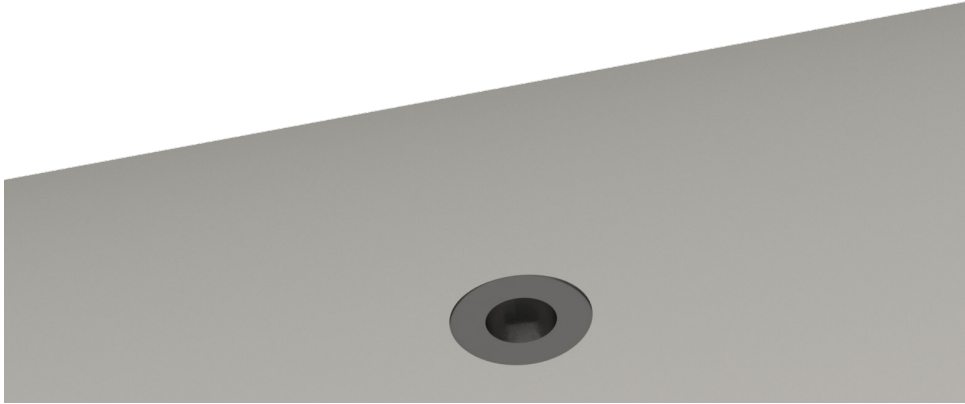


PRODUCT DIMENSIONS



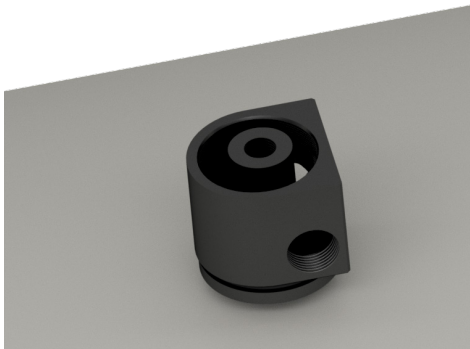
MOUNTING INSTRUCTIONS

1. Prepare a flat surface using a spot face tool and drill a pilot hole for tapping $\frac{3}{4}$ -14 NPT threading. CTC recommends our MH117 spot face kits for a 1.25 in. face: MH117-1A, MH117-4A, MH117-6A, and MH117-11A.

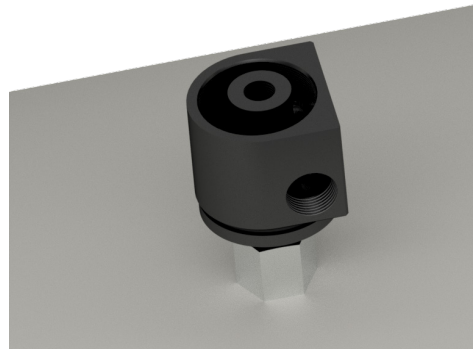


2. Mount base onto machine. If using a standoff, thread base into the standoff beforehand. It is recommended to wrap the threads using FEP tape.

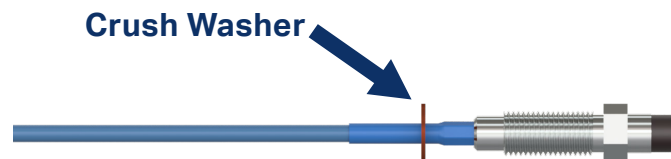
Without Standoff



With Standoff



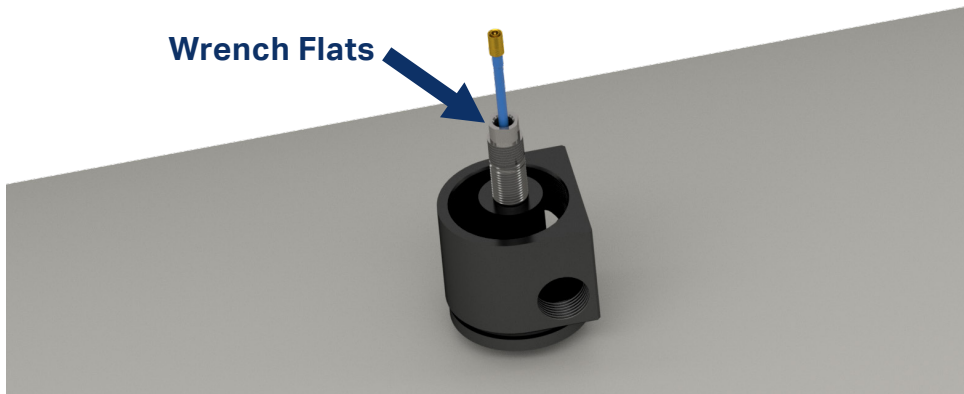
3. Install crush washer onto probe. When the probe is tightened into the mounting sleeve, the washer will deform to fit the space in between the probe and mounting case. For this reason, it is recommended to replace the crush washer every time a probe is removed from the mounting sleeve. (Replacement crush washers sold separately).



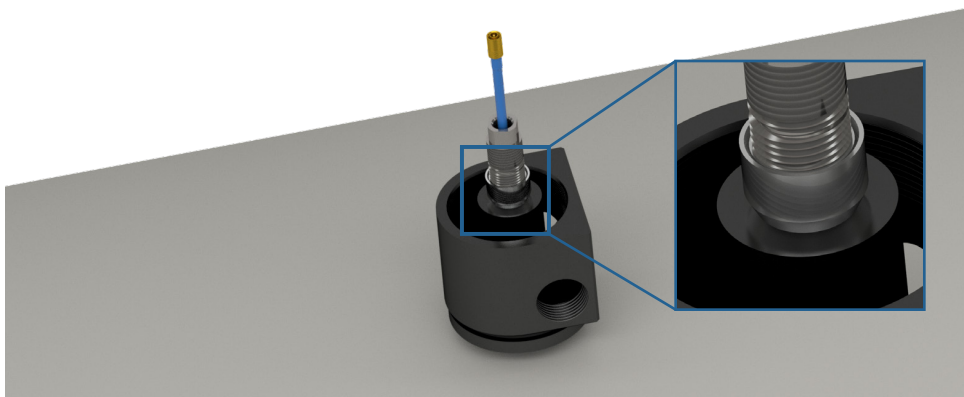
4. Thread reverse mount probe into stainless steel sleeve.



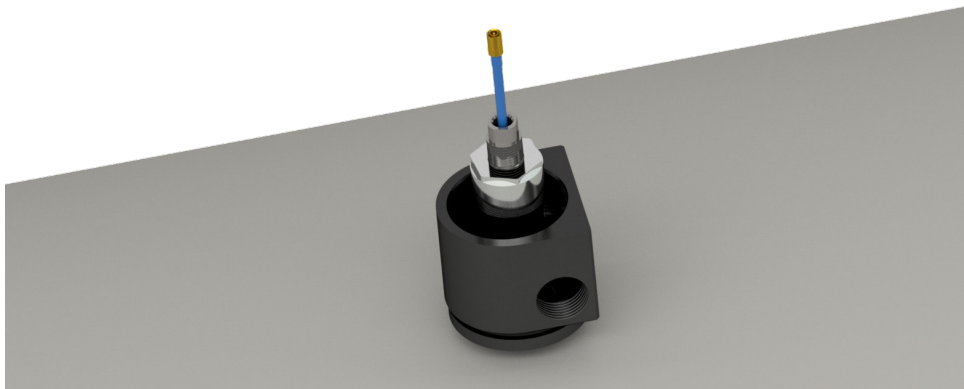
5. Insert sleeve into housing. Tighten and adjust the probe gap to desired penetration depth using the wrench flats on the sleeve.



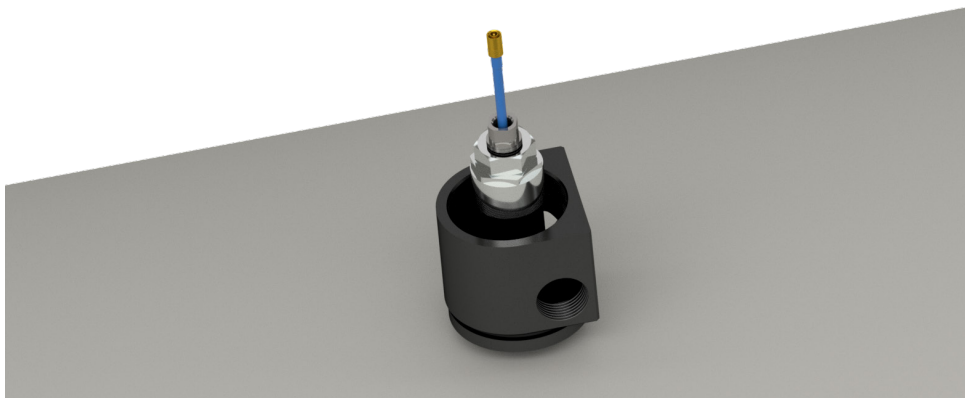
6. Attach sleeve adjustor. Continue threading until it bottoms out on the mounting base.



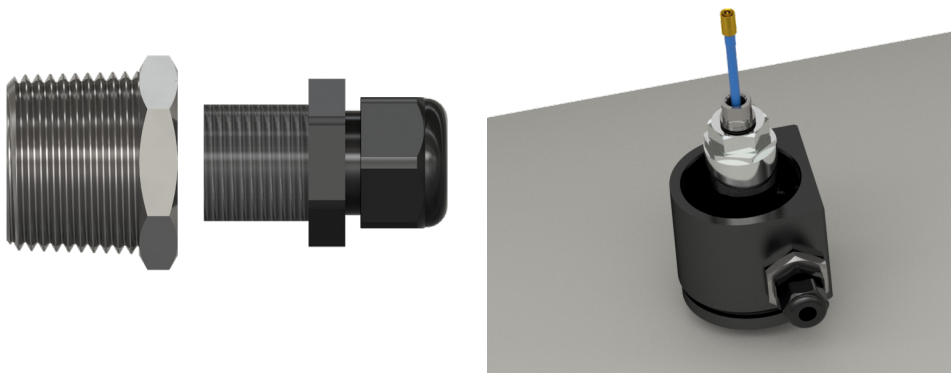
7. Add coupling nut onto probe sleeve.



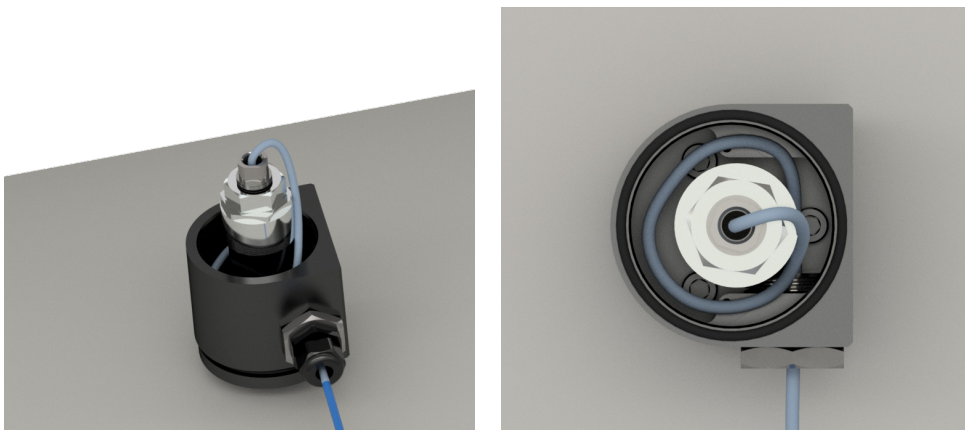
8. Tighten hex nut onto coupling nut.



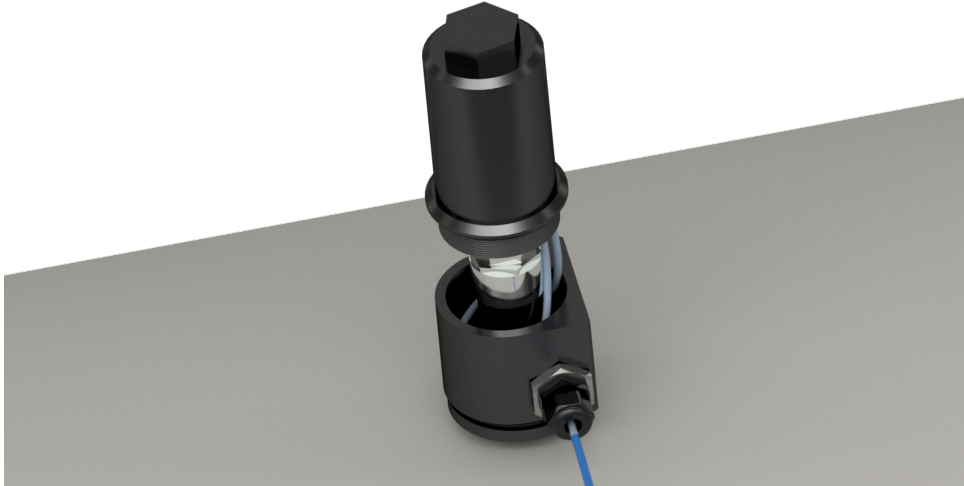
9. If using a reducer bushing, thread the cord grip onto the bushing. Then attach to the exit fitting the cabling will feed through.



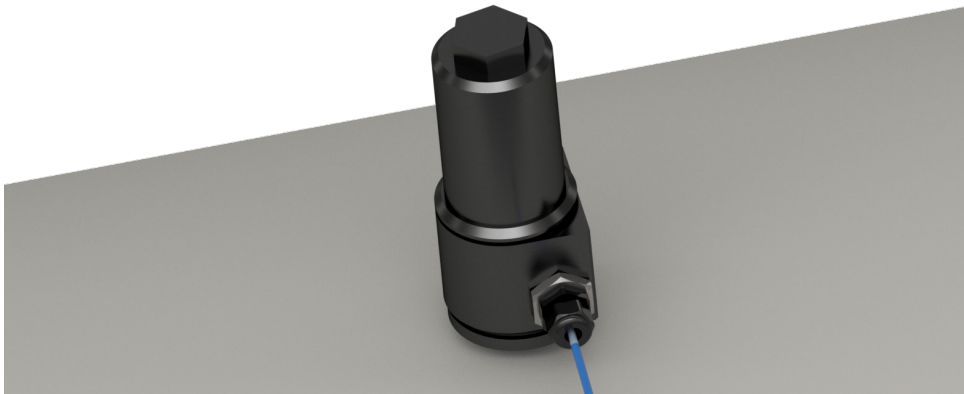
10. Attach extension cable to probe. Wrap the cable around the center diameter to keep it at the base of the housing. Run extension cable out of the housing through one of the two 3/4-14 NPT ports.



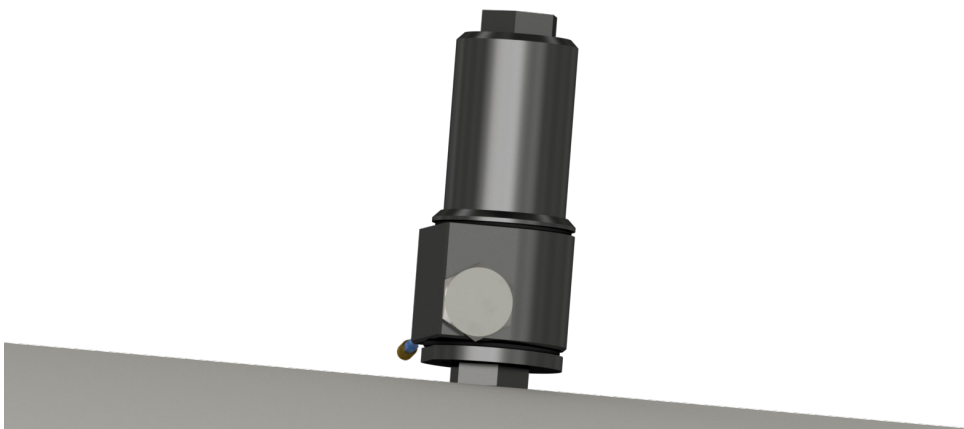
11. Bundle extra cable and push into lid.



12. Tighten lid onto housing.



13. Seal the remaining NPT exit.



WARRANTY AND REFUND

Please visit www.ctconline.com to view a complete recapitulation of our warranty and refund policies.

CONTACT INFORMATION

Connection Technology Center, Inc. (CTC)

7939 Rae Blvd.

Victor, NY 14564

1.585.924.5900

sales@ctconline.com

www.ctconline.com

