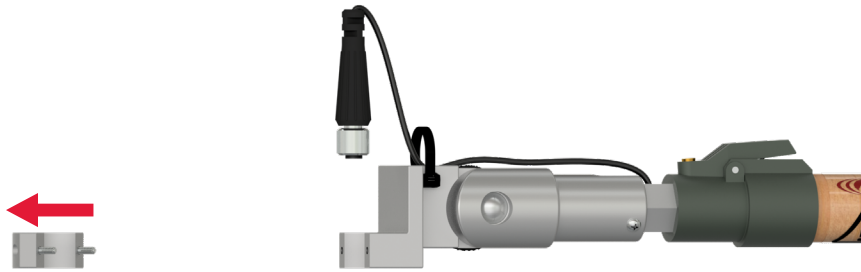
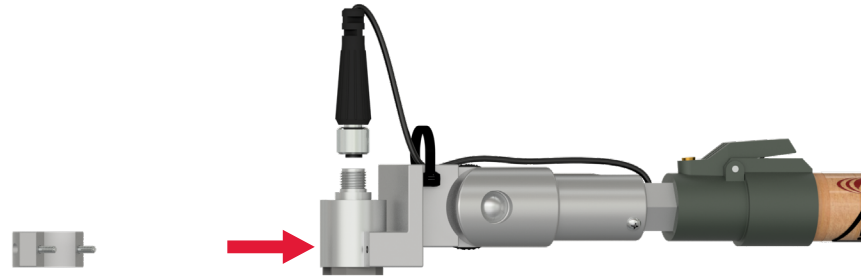


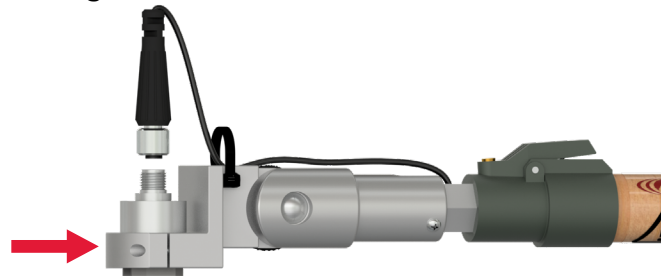
1. Using the included 7/64 in. Allen wrench, loosen the screws and remove the front portion of the grip.



2. Place the base of the [Emerson A0643TX](#) accelerometer into the opening of the grip. **Ensure that the triaxial accelerometer is in the desired orientation during placement.**



3. Replace the front of the grip and tighten screws.



4. Attach the C640 connector to the threaded barrel of the accelerometer, tighten down the cable tie and clip off loose end.

