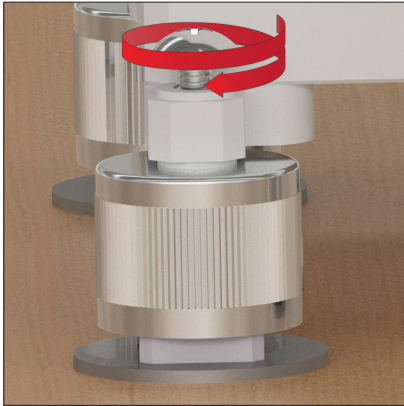


BOXMOUNT-1A INSTALLATION GUIDE



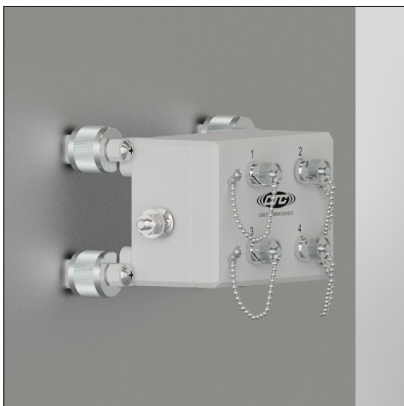
1. Leaving the magnets attached to their shunts, arrange them on a flat, level surface. Place the junction box on top of the magnets.



2. Insert the screw through the channel on the junction box foot into the tapped hole of the magnet and tighten until the screw is hand tight.



3. Repeat this process for the remaining three screws.



4. Remove the shunts from the magnetic bases. Attach the assembly to a metal surface at the intended location.

