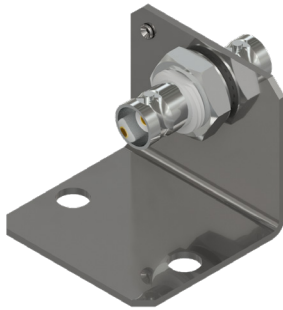
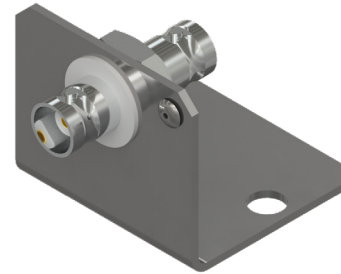


CB917 Series

BNC Mounting Brackets

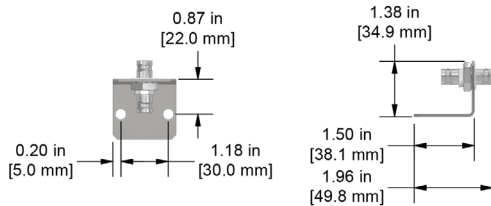


Sensor Cabling Connection Point



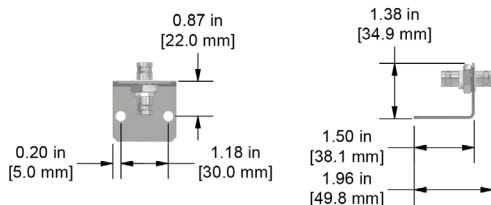
Data Collection Point

CB917-1A



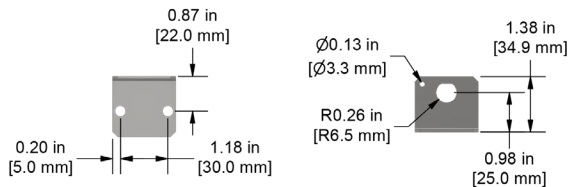
BNC Jack to Jack Connector (Nickel-Plated Brass) with Mounting Bracket (304 Stainless Steel), Includes BNC Cap Cover and Chain

CB917-2A



BNC Jack to Jack Connector (Nickel-Plated Brass) with Mounting Bracket (304 Stainless Steel), Includes Plastic Protective Cap

CB917-3A



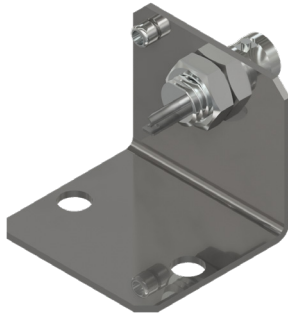
BNC Mounting Bracket Only (304 Stainless Steel), 1/2 in. "D" Hole Punch, for use with CB910-2A

Backed by our Unconditional Lifetime Warranty

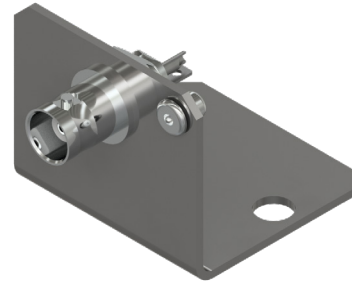
www.ctconline.com | sales@ctconline.com | 585-924-5900

CB917 Series

BNC Mounting Brackets

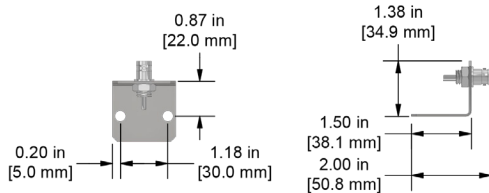


Sensor Cabling Connection Point



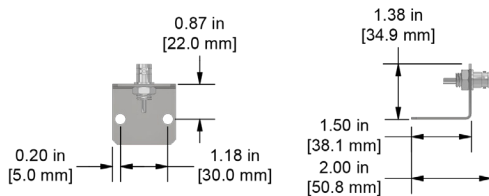
Data Collection Point

CB917-4A



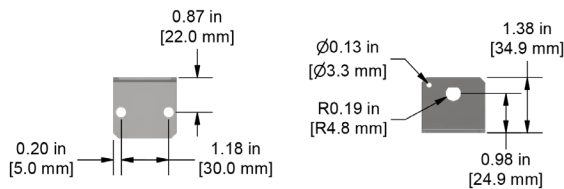
BNC Jack Connector (Nickel-Plated Brass)
with Mounting Bracket (304 Stainless Steel),
Includes BNC Cap Cover and Chain,
Solder Connection Required

CB917-5A



BNC Jack Connector (Nickel-Plated Brass)
with Mounting Bracket (304 Stainless Steel),
Solder Connection Required

CB917-6A



BNC Mounting Bracket Only
(304 Stainless Steel),
3/8 in. "D" Hole Punch,
for use with CB904-1A

Backed by our Unconditional Lifetime Warranty

www.ctconline.com | sales@ctconline.com | 585-924-5900