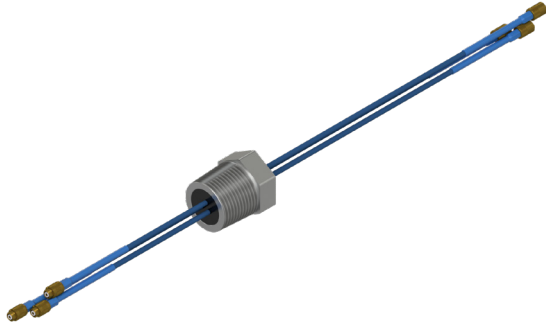


# DM1000 Series

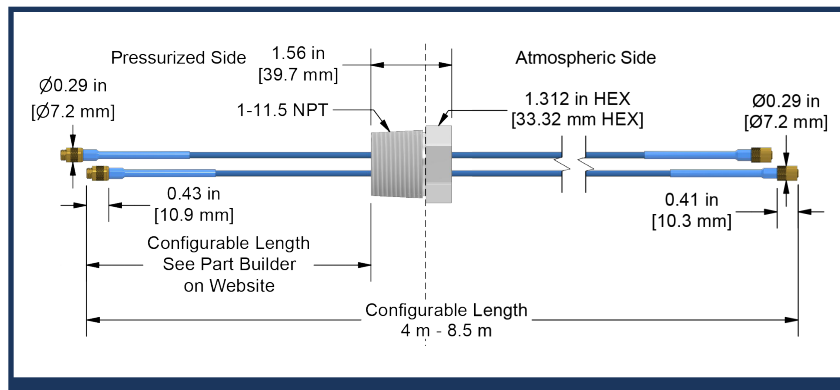
NPT Fitting Pressure Seal with Proximity  
Probe Extension Cabling Factory Installed



## Product Features

Single-Sided 1-11.5 NPT Fitting with Proximity  
Probe Extension Cables Factory Installed

- Proximity probe extension cables are permanently epoxied into the fitting and rated to 400 PSI
- Configurable for 1, 2, or 3 proximity probe extension cables
- Standard FEP jacketed and armor jacketed proximity probe extension cable options available
- Available for use with standard and Class I Division 2/Zone 2 hazardous rated PRO Proximity Probe Systems



## Specifications

Temperature Range: -39 °F to 340 °F (-45 °C to 171 °C)

NPT Fitting Case Material 316L Stainless Steel

Compatibility For use with PRO 8 mm, 11 mm, 25 mm or FFv 5 mm Systems

See Proximity Probe Extension Cable datasheet for cable specifications.

## Ordering Information

NPT Fitting	Cable Count	Armor*	Probe Diameter	Cable 1 High Pressure Length**	Cable 1 Overall Length	Cable 2 High Pressure Length**	Cable 2 Overall Length	Cable 3 High Pressure Length**	Cable 3 Overall Length	Connector Protector†	Hazardous Rated
1 = Single-Ended 2 = Double-Ended	1 = 1 Cable 2 = 2 Cables 3 = 3 Cables	0 = No Armor 1 = Armored on High Pressure Side 2 = Armored on Low Pressure Side 3 = Armored on Both Sides	1 = 8 mm 7 = 11 mm 8 = 25 mm 9 = 5 mm FFv	05 = 0.5 Meters 10 = 1.0 Meters 15 = 1.5 Meters 20 = 2.0 Meters 25 = 2.5 Meters 30 = 3.0 Meters 35 = 3.5 Meters 40 = 4.0 Meters 45 = 4.5 Meters 50 = 5.0 Meters 55 = 5.5 Meters 60 = 6.0 Meters 65 = 6.5 Meters 70 = 7.0 Meters 75 = 7.5 Meters 80 = 8.0 Meters	40 = 4.0 Meters 45 = 4.5 Meters 50 = 5.0 Meters 55 = 5.5 Meters 60 = 6.0 Meters 65 = 6.5 Meters 70 = 7.0 Meters 75 = 7.5 Meters 80 = 8.0 Meters 85 = 8.5 Meters	Blank = N/A 05 = 0.5 Meters 10 = 1.0 Meters 15 = 1.5 Meters 20 = 2.0 Meters 25 = 2.5 Meters 30 = 3.0 Meters 35 = 3.5 Meters 40 = 4.0 Meters 45 = 4.5 Meters 50 = 5.0 Meters 55 = 5.5 Meters 60 = 6.0 Meters 65 = 6.5 Meters 70 = 7.0 Meters 75 = 7.5 Meters 80 = 8.0 Meters	Blank = N/A 40 = 4.0 Meters 45 = 4.5 Meters 50 = 5.0 Meters 55 = 5.5 Meters 60 = 6.0 Meters 65 = 6.5 Meters 70 = 7.0 Meters 75 = 7.5 Meters 80 = 8.0 Meters 85 = 8.5 Meters	Blank = N/A 05 = 0.5 Meters 10 = 1.0 Meters 15 = 1.5 Meters 20 = 2.0 Meters 25 = 2.5 Meters 30 = 3.0 Meters 35 = 3.5 Meters 40 = 4.0 Meters 45 = 4.5 Meters 50 = 5.0 Meters 55 = 5.5 Meters 60 = 6.0 Meters 65 = 6.5 Meters 70 = 7.0 Meters 75 = 7.5 Meters 80 = 8.0 Meters	Blank = N/A 40 = 4.0 Meters 45 = 4.5 Meters 50 = 5.0 Meters 55 = 5.5 Meters 60 = 6.0 Meters 65 = 6.5 Meters 70 = 7.0 Meters 75 = 7.5 Meters 80 = 8.0 Meters	00 = No Connector Protectors 02 = Connector Protectors Installed	00 = Not Rated 05 = Cl, D2/Zone 2 Approved

\*If armor is selected, there must be at least 1 m length on the armored side(s) of the fitting.  
\*\*High Pressure Cable Length may not exceed Overall Length minus 0.5 meter.  
†Connector protectors required for hazardous locations.