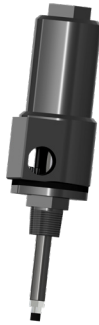


# DM91000

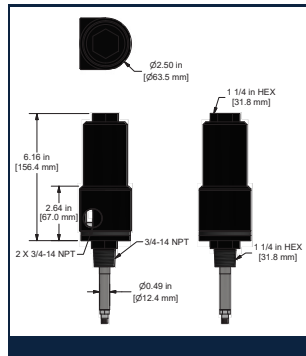
Reverse Mount Proximity Probe Housing



## Product Features

Protect important proximity probe instruments in harsh manufacturing conditions. Easily adjust the gap between machine shaft and probe or replace an extension cable without machine shutdown.

- Convenient wrench flats for installation
- Viton O-ring sealed probe sleeve and housing
- API 670 compliant



## Specifications

Temperature Range: -31 °F to 350 °F (-35 °C to 177 °C)

Aluminum Body with 316L Stainless Steel Sleeve

Maximum Proximity Probe Penetration Depths with Probe Connector Access within Housing

0.5 meter probes — 13.5 in. (342.9 mm)

1.0 meter probes — 29.2 in. (741.68 mm)

3/4-14 NPT Mounting Thread

Weight: 2.5 lbs (40 oz) average weight with probe

Only compatible with reverse mount, 3/8-24 threaded probes

## Ordering Information

DM91000	-	<input type="text"/>	-	00	-	<input type="text"/>	<input type="text"/>	-	<input type="text"/>	-	<input type="text"/>	-	<input type="text"/>
<b>Probe Compatibility</b>		<b>Standoff Adapter</b>		<b>Penetration Option</b>		<b>Fitting Option</b>		<b>Mounting Option</b>					
<p>16 = 8 mm Probe 26 = FFV Probe 29 = 11 mm Probe</p>		<p>00 = No Standoff 02 = 2.0 in. 03 = 3.0 in. 04 = 4.0 in. 05 = 5.0 in.</p>		<p>022 = 2.2 in. 032 = 3.2 in. 042 = 4.2 in. 052 = 5.2 in. 062 = 6.2 in. 072 = 7.2 in. 082 = 8.2 in. 102 = 10.2 in. 112 = 11.2 in. 122 = 12.2 in.</p>		<p>00 = No Fitting Two Hole Seals 03 = One 3/4-14 NPT Plug; One 3/4-14 to 3/8-14 NPT reducer; one cable seal grip 04 = One 3/4-14 NPT plug only</p>		<p>02 = 3/4-14 NPT</p>					

Backed by our Unconditional Lifetime Warranty

www.ctconline.com | sales@ctconline.com | 585-924-5900