

WSK Series

Connect Line Wireless Products Starter Kit



Product Features

- » Includes our most popular, fully-functional Connect Line wireless solutions
- » Heavy-duty, foam-lined plastic case is waterproof and TSA approved
- » Exterior Dimensions: 16.30 in. (414 mm) L x 13.58 in. (345 mm) W x 5.08 in. (129 mm) D

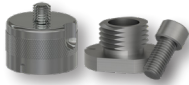
Built To Order

Standard Inclusions



MH214-3A Multipurpose Mounting Magnet

2 Rail Magnet Mounting Base with 1/4-28 Blind Tapped Hole and Integral Rotating Mounting Nut, 50 lbs. Pull Strength; 1.4 in. (35.56 mm) OD, 0.75 in. (19.05 mm) Height; Requires 1/4 in. Allen Key (Included in Kit)



MH107-3A Quick Disconnect Receptacle and MH107-2B Quick Disconnect Stud

Receptacle: 1/4-28 Adjustable Orientation with Integral Stud Mounting Bolt; 1.00 in. (25.4 mm) OD, 0.88 in. (22.4 mm) Height; Requires 3/16 in. Allen Key (Included in Kit); Stud: 1.00 in. (25.4 mm) OD, 0.56 in. (14.1 mm) Height, 1/4-28 Threaded Mounting Bolt



ACCESS360 ConnectBridge™ Network Controller and Wireless Gateway

Polycarbonate Enclosure with Expandable 32 GB On-Board Storage; 4.72 in. (120.0 mm) Length x 3.15 in. (80 mm) Width x 2.21 in. (56.1 mm) Depth; Includes Preinstalled ConnectView™ Web App



WS-PoE Power over Ethernet Injector

60 W PoE++ Adapter for use with ConnectBridge™ Gateway in Areas Where Target Network's Connecting Ethernet Device (Switch, Router, etc.) Does Not Support PoE Connections, 4.18 in. (106.0 mm) Length x 2.47 in. (62.7 mm) Width x 1.45 in. (36.8 mm) Depth

Your Choice of Two Sensors



WS101-13-04-01 ConnectSens™ Wireless Sensor

- » Triaxial Overall Vibration Signal with Temperature Output
- » 2,100 ft. (640 m) Line-of-Sight Range
- » Nylon Cap and Stainless Steel Base
- » 1 Hour Reading Interval (Not Field Configurable)
- » User-Replaceable 3.6V Lithium Thionyl Chloride Battery
- » 1.53 in. (38.7 mm) OD and 1.69 in. (42.9 mm) Height



WS201-364-12 ConnectSens™ Wireless Sensor

- » Single-Axis Dynamic Vibration Signal Capture with Temperature Output
- » 1,200 ft. (366 m) Line-of-Sight Range
- » Nylon Cap and Stainless Steel Base
- » 12 Hour Reading Interval (Field Configurable)
- » User-Replaceable 3.6V Lithium Thionyl Chloride Battery
- » 1.53 in. (38.7 mm) OD and 1.69 in. (42.9 mm) Height



WS301-363-12 ConnectSens™ Wireless Sensor

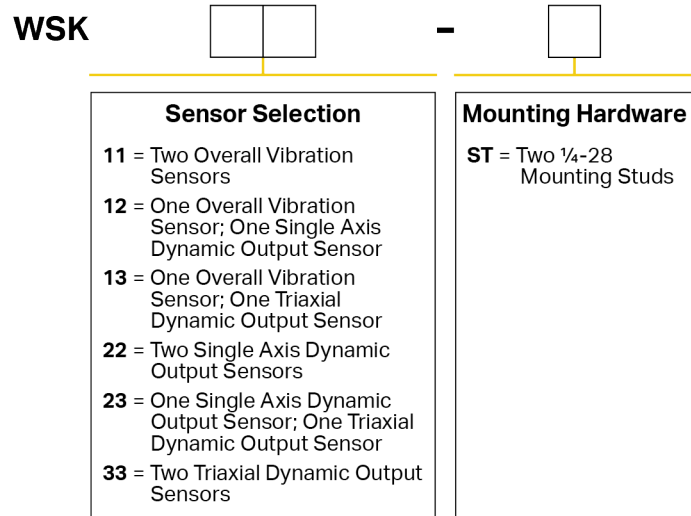
- » Triaxial Dynamic Vibration Signal Capture with Temperature Output
- » 1,200 ft. (366 m) Line-of-Sight Range
- » Nylon Cap and Stainless Steel Base
- » 12 Hour Reading Interval (Field Configurable)
- » User-Replaceable 3.6V Lithium Thionyl Chloride Battery
- » 1.53 in. (38.7 mm) OD and 1.69 in. (42.9 mm) Height

WSK Series

Connect Line Wireless Products Starter Kit



Ordering Information



Please note:

Sensors ship with batteries disconnected. Please connect the battery to begin using.

This Kit contains lithium metal batteries. The shipping of batteries is tightly regulated under various international and national guidelines to ensure safety. For shipping purposes, WSK Series is classified as UN3091 Section II due to the battery being contained inside the equipment. If flying with WSK Series, this should be brought as a carry-on item only.