

**THIS IS WHY YOU CHOOSE**



**VIBRATION ANALYSIS HARDWARE**



**Heavy Duty  
BNC Connectors**



**Rugged MIL  
Connectors with  
Molded Strain Relief**



**Rare Earth Magnets  
with Stainless Steel  
Construction**



# **CTC Compatible Products for Commtest® Instruments**

***Unconditional  
Lifetime Warranty***

***If any CTC Vibration Analysis  
Hardware product should ever  
fail, we will repair or replace it.***



# General Purpose Accelerometers



*AC192 Series*



*AC194 Series*

**100 mV/g**  
**+/- 10%**



*AC102 Series*



*AC104 Series*



*AC184 Series (M8)*



# Specialty Accelerometers



**AC135 Series**  
500 mV/g



**AC136 Series**  
500 mV/g



**AC131 Series**  
10 mV/g



**AC207 Series**  
High Temperature



**AC208 Series**  
High Temperature



**AC288 Series (M8)**  
High Temperature



# Magnet Mount Accelerometer

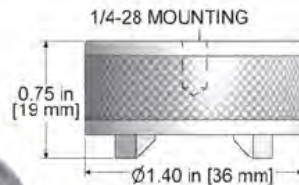
**AC116-1A**



## Ergonomic Design

- ✓ 100 mV/g
- ✓ +/- 10%
- ✓ 0.5 – 15,000 Hz.

**MH214-3A**  
with Hexagonal Wrench



50 lbs.  
(23 kg)

1/4-28  
Integral Rotating  
Mounting Nut

Stainless Steel  
Neodymium



magnet feet parallel with sensor cable



magnet feet perpendicular with sensor cable



magnet feet rotated with sensor cable

## Product Purpose

**For Use With AC116-1A / AC216-1A Magnet Mount Accelerometer**

The MH214-3A Easy Positioning Curved Surface Magnet can be adjusted so that the 2 poles of the magnet can be parallel to the data collector cable, perpendicular to the data collector cable, or in any rotational reference to the data collector cable that you like. An aluminum hex wrench is included with each magnet for easy adjustment.



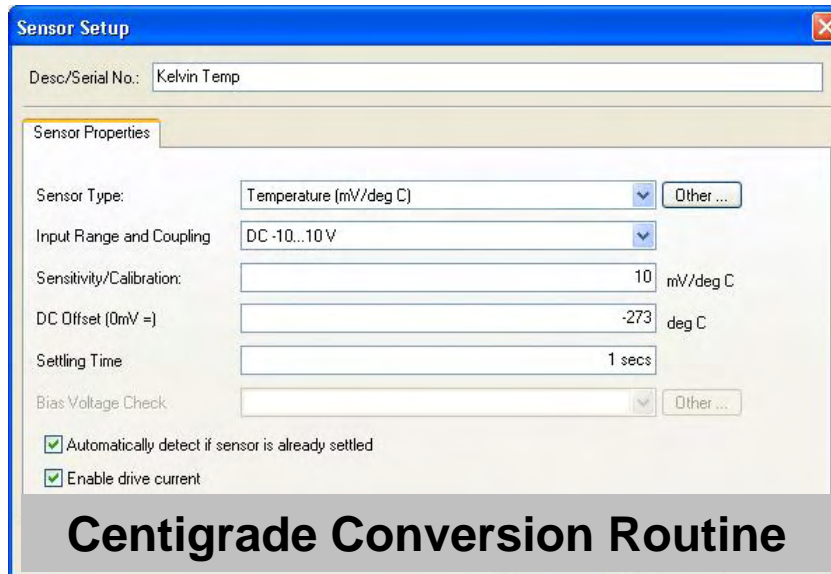
# Vibration & Temperature

100 mV/g, 10 mV/°K

TA174  
Series



TA172  
Series



M8 Captive Bolt  
TA178 Series



# Portable Cables - Coiled



**F**

**SF**

**CB104/CB108**

**K2C**

CB104-K2C-006-F-SF	Black polyurethane coiled cable, 2 ft retracted, 6 ft. extended, .210 OD; 2 Socket MIL-style connector with strain relief; BNC plug, molded ; Break-away safety connector feature
CB104-K2C-010-F-SF	Black polyurethane coiled cable, 3 ft retracted, 10 ft. extended; 2 Socket MIL-style connector with strain relief; BNC plug, molded ; Break-away safety connector feature
CB104-K2C-016-F-SF	Black polyurethane coiled cable, 4.5 ft retracted, 16 ft. extended, .210 OD; 2 Socket MIL-style connector with strain relief; BNC plug, molded ; Break-away safety connector feature
CB108-K2C-006-F-SF	Black polyurethane jacketed, coiled cable, 2 ft retracted, 6 ft. extended, .190 OD ; 2 Socket MIL-style connector with strain relief; BNC plug, molded ; Break-away safety connector feature
CB108-K2C-010-F-SF	Black polyurethane coiled cable, 3 ft retracted, 10 ft. extended, .190 OD ; 2 Socket MIL-style connector with strain relief; BNC plug, molded ; Break-away safety connector feature
CB108-K2C-016-F-SF	Black polyurethane jacketed, coiled cable, 4.5 ft retracted, 16 ft. extended, .190 OD ; 2 Socket MIL-style connector with strain relief; BNC plug, molded ; Break-away safety connector feature

# Portable Cables - Coiled



**FX90**

**SF**

**CB104/CB108**

**K2C**

CB104-K2C-006-FX90-SF	Black polyurethane coiled cable, 2 ft retracted, 6 ft. extended, .210 OD; 2 Socket MIL-style connector with strain relief; FX90 plug, Break-away safety connector feature
CB104-K2C-010-FX90-SF	Black polyurethane coiled cable, 3 ft retracted, 10 ft. extended; 2 Socket MIL-style connector with strain relief; FX90 plug, Break-away safety connector feature
CB104-K2C-016-FX90-SF	Black polyurethane coiled cable, 4.5 ft retracted, 16 ft. extended, .210 OD; 2 Socket MIL-style connector with strain relief; FX90 plug, Break-away safety connector feature
CB108-K2C-006-FX90-SF	Black polyurethane jacketed, coiled cable, 2 ft retracted, 6 ft. extended, .190 OD ; 2 Socket MIL-style connector with strain relief; FX90 plug, Break-away safety connector feature
CB108-K2C-010-FX90-SF	Black polyurethane coiled cable, 3 ft retracted, 10 ft. extended, .190 OD ; 2 Socket MIL-style connector with strain relief; FX90 plug, Break-away safety connector feature
CB108-K2C-016-FX90-SF	Black polyurethane jacketed, coiled cable, 4.5 ft retracted, 16 ft. extended, .190 OD ; 2 Socket MIL-style connector with strain relief; FX90 plug, Break-away safety connector feature

# Portable Cables - Straight



**F/FX90**

**SF**

**CB103**

**K2C**

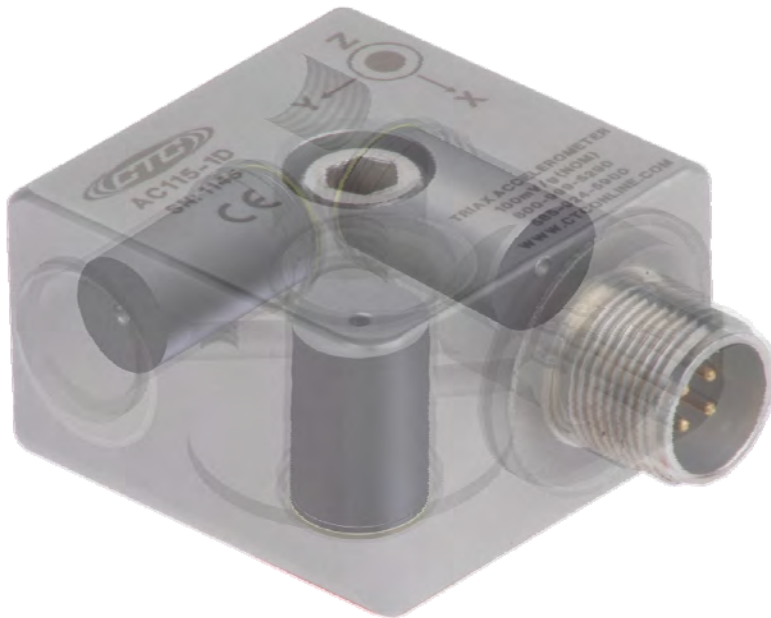
CB103-K2C-004-F-SF	Polyurethane jacketed cable, black, twisted, shielded pair, .250" OD, 250 F, AWG=20; 4 ft. overall length; Medium size 2 socket connector for portable data collectors; BNC plug (pin) connector; Break-away safety connector feature
CB103-K2C-006-F-SF	Polyurethane jacketed cable, black, twisted, shielded pair, .250" OD, 250 F, AWG=20; 6 ft. overall length; Medium size 2 socket connector for portable data collectors; BNC plug (pin) connector; Break-away safety connector feature
CB103-K2C-010-F-SF	Polyurethane jacketed cable, black, twisted, shielded pair, .250" OD, 250 F, AWG=20; 10 ft. overall length; Medium size 2 socket connector for portable data collectors; BNC plug (pin) connector; Break-away safety connector feature
CB103-K2C-004-FX90-SF	Polyurethane jacketed cable, black, twisted, shielded pair, .250" OD, 250 F, AWG=20; 4 ft. overall length; Medium size 2 socket connector for portable data collectors; FX90 plug (pin) connector; Break-away safety connector feature
CB103-K2C-006-FX90-SF	Polyurethane jacketed cable, black, twisted, shielded pair, .250" OD, 250 F, AWG=20; 6 ft. overall length; Medium size 2 socket connector for portable data collectors; FX90 plug (pin) connector; Break-away safety connector feature
CB103-K2C-010-FX90-SF	Polyurethane jacketed cable, black, twisted, shielded pair, .250" OD, 250 F, AWG=20; 10 ft. overall length; Medium size 2 socket connector for portable data collectors; FX90 plug (pin) connector; Break-away safety connector feature



# Triaxial Accelerometers

## ➤ AC115-1A

- ✓ 100 mV/g +/-15%
- ✓ 1.0 – 6,500 Hz.



## ➤ AC230-1A

- ✓ 100 mV/g +/-5%
- ✓ 0.6 – 10,000 Hz.



*X, Y, Z Axis Orientation*

# Triaxial Cables - Coiled



**C416**

**SFT**

**CB117**

**J4C**

CB117-C416-006-J4C-SFT	Cable, 6 ft. coiled, with 7 pin Lemo, and J4C Connectors compatible with AC115 or AC230 Tri-axial Accelerometers. Includes Break-Away Safety Connector.
CB117-C416-010-J4C-SFT	Cable, 10 ft. coiled, with 7 pin Lemo, and J4C Connectors compatible with AC115 or AC230 Tri-axial Accelerometers. Includes Break-Away Safety Connector.
CB117-C416-016-J4C-SFT	Cable, 16 ft. coiled, with 7 pin Lemo, and J4C Connectors compatible with AC115 or AC230 Tri-axial Accelerometers. Includes Break-Away Safety Connector.

# Triaxial Cables - Straight



**C416**

**SFT**

**CB105**

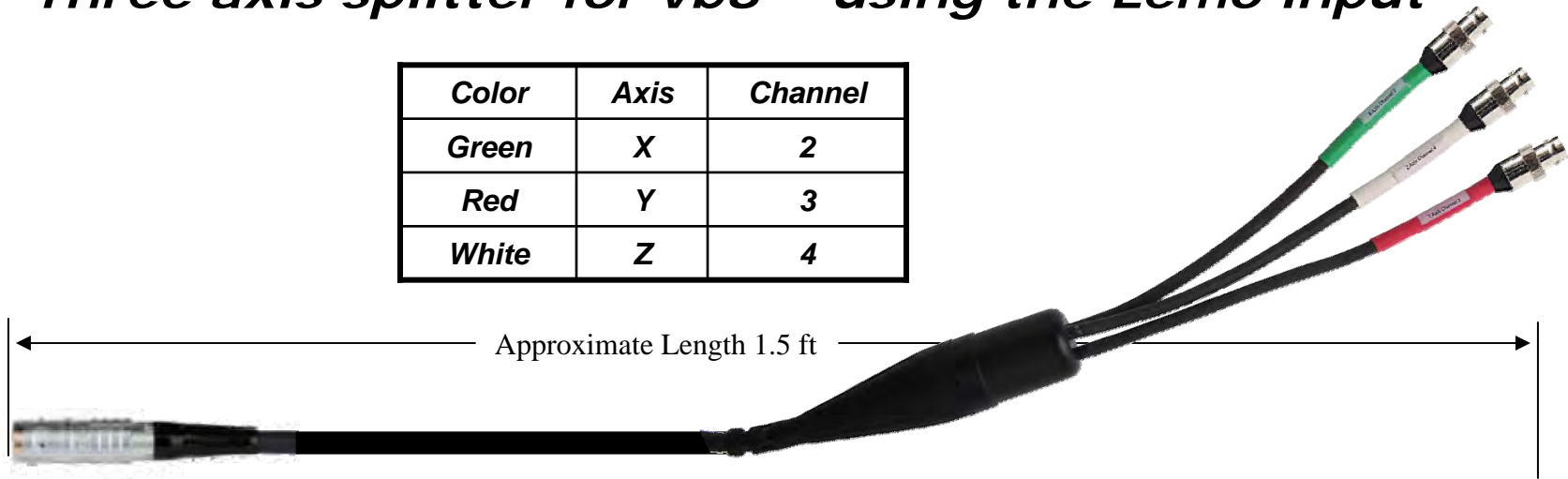
**J4C**

CB105-C416-006-J4C-SFT	Cable, 6 ft. straight, with 7 pin Lemo, and J4C Connectors compatible with AC115 or AC230 Tri-axial Accelerometers. Includes Break-Away Safety Connector.
CB105-C416-010-J4C-SFT	Cable, 10 ft. straight, with 7 pin Lemo, and J4C Connectors compatible with AC115 or AC230 Tri-axial Accelerometers. Includes Break-Away Safety Connector.
CB105-C416-016-J4C-SFT	Cable, 16 ft. straight, with 7 pin Lemo, and J4C Connectors compatible with AC115 or AC230 Tri-axial Accelerometers. Includes Break-Away Safety Connector.

# Triaxial Cables - Splitter

Three axis splitter for vb8™ using the Lemo input

Color	Axis	Channel
Green	X	2
Red	Y	3
White	Z	4



**C416**

**CB105**

**C475**

CB105-C416-000.5-C475

Cable, 0.5 ft. straight, with 7 pin Lemo, and 3 each BNC Jack Connectors labeled (Green, X axis, Channel 2) (Red, Y axis, Channel 3) (White, Z axis, Channel 4). Approximate length 1.5 ft overall.

# Cut Length Safety Cables

Accelerometer



F



CB103



C371 (SF)



C372 (SF)



CB103



K2C

Triaxial  
Accelerometer



C416



CB105



C471 (SFT)



C472 (SFT)



CB105



J4C



# ***BNC Adaptors***



**CB910-1A**



**CB911-1A**



**CB910-3A**



**CB919-1A**



**CB911-2A**

# Ch #2 Coiled Cable vb8™



**C451**

**SF**

**CB104/CB108**

**K2C**

CB104-C451-006-K2C-SF	Black polyurethane coiled cable, 2 ft retracted, 6 ft. extended, .210 OD; 2 Socket MIL-style connector with strain relief; 7 Pin Lemo, Break-away safety connector feature
CB104-C451-010-K2C-SF	Black polyurethane coiled cable, 3 ft retracted, 10 ft. extended; 2 Socket MIL-style connector with strain relief; 7 Pin Lemo, Break-away safety connector feature
CB104-C451-016-K2C-SF	Black polyurethane coiled cable, 4.5 ft retracted, 16 ft. extended, .210 OD; 2 Socket MIL-style connector with strain relief; 7 Pin Lemo, Break-away safety connector feature
CB108-C451-006-K2C-SF	Black polyurethane jacketed, coiled cable, 2 ft retracted, 6 ft. extended, .190 OD ; 2 Socket MIL-style connector with strain relief; 7 Pin Lemo, Break-away safety connector feature
CB108-C451-010-K2C-SF	Black polyurethane coiled cable, 3 ft retracted, 10 ft. extended, .190 OD ; 2 Socket MIL-style connector with strain relief; 7 Pin Lemo, Break-away safety connector feature
CB108-C451-016-K2C-SF	Black polyurethane jacketed, coiled cable, 4.5 ft retracted, 16 ft. extended, .190 OD ; 2 Socket MIL-style connector with strain relief; 7 Pin Lemo, Break-away safety connector feature

# Ch #2 Straight Cable vb8™



**C451**

**SF**

**CB103**

**K2C**

CB103-C451-004-K2C-SF	Polyurethane jacketed cable, black, twisted, shielded pair, .250" OD, 250 F, AWG=20; 4 ft. overall length; Medium size 2 socket connector for portable data collectors; 7 Pin Lemo connector; Break-away safety connector feature
CB103-C451-006-K2C-SF	Polyurethane jacketed cable, black, twisted, shielded pair, .250" OD, 250 F, AWG=20; 6 ft. overall length; Medium size 2 socket connector for portable data collectors; 7 Pin Lemo connector; Break-away safety connector feature
CB103-C451-010-K2C-SF	Polyurethane jacketed cable, black, twisted, shielded pair, .250" OD, 250 F, AWG=20; 10 ft. overall length; Medium size 2 socket connector for portable data collectors; 7 Pin Lemo connector; Break-away safety connector feature





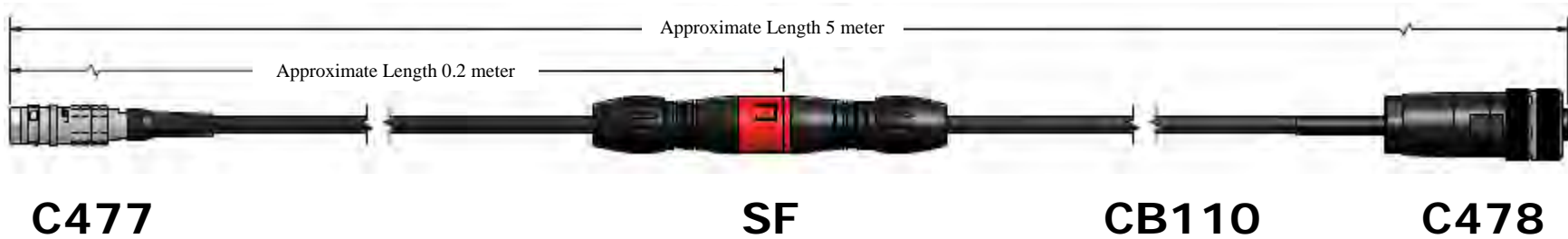
# *Ch #2 Adaptor vb8™*



- For Single Channel Acceleration Input to commtest® vb8™ (Channel 2)
- Adapts Existing Cables for use with the vb8™

**CBC199-218**  
**commtest® Data Collector Adapter**

# Laser Tachometer Cable

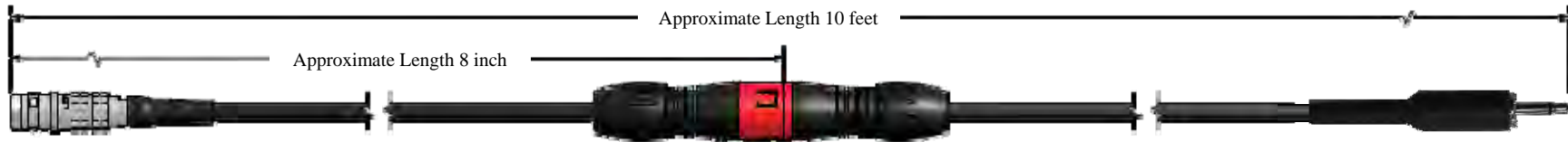


CB110-C477-005M-C478-SF	Polyurethane jacketed cable, black, twisted, shielded pair, .175" OD, 250 F, AWG=20; 5 meter overall length; M12 connector for laser tachometer; 4 Pin Lemo connector for portable data collector; Break-away safety connector feature.
-------------------------	---

## ➤ Compatible with:

- ✓ vb5™
- ✓ vb6™
- ✓ vb7™
- ✓ vb8™
- ✓ vbBalancer™
- ✓ vbBalancer+™
- ✓ LASA0062
- ✓ LASA0315

# TTL Tachometer Cable



C395

SF

CB110

C302

CB110-C395-010-C302-SF

Polyurethane jacketed cable, black, twisted, shielded pair, .175" OD, 250 F, AWG=20; 10 ft. overall length; C302 mono plug tachometer connector; 4 Pin Lemo connector for portable data collector; Break-away safety connector feature.

## ➤ Compatible with:

✓ vb5™

✓ vb8™

✓ vb6™

✓ vbBalancer™

✓ vb7™

✓ vbBalancer+™

# TTL Tachometer Cable



C395

SF

CB110

F

CB110-C395-010-F-SF

Polyurethane jacketed cable, black, twisted, shielded pair, .175" OD, 250 F, AWG=20; 10 ft. overall length; BNC plug tachometer connector; 4 Pin Lemo connector for portable data collector; Break-away safety connector feature.

## ➤ Compatible with:

✓ vb5™

✓ vb8™

✓ vb6™

✓ vbBalancer™

✓ vb7™

✓ vbBalancer+™

# Tachometer Cable



C304

SF

CB110

C302

CB110-C304-010-C302-SF

Polyurethane jacketed cable, black, twisted, shielded pair, .175" OD, 250 F, AWG=20; 10 ft. overall length; C302 mono plug tachometer connector; C304 four socket connector for portable data collector; Break-away safety connector feature.

➤ **Compatible with:**

✓ vbClassic™

# Tachometer Cable



C304

SF

CB110

F

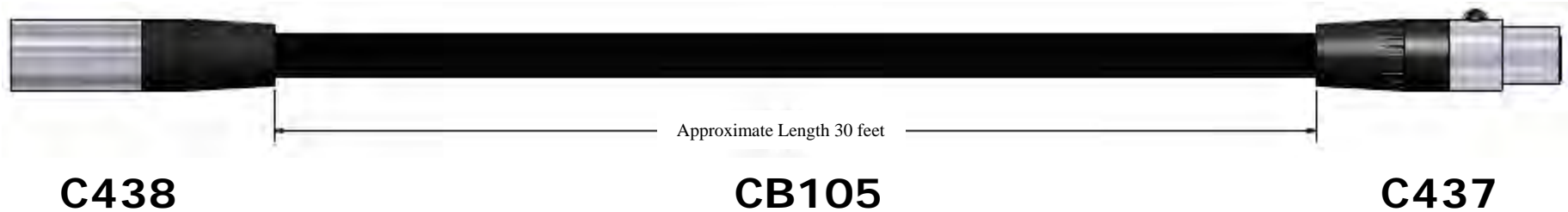
CB110-C304-010-F-SF

Polyurethane jacketed cable, black, twisted, shielded pair, .175" OD, 250 F, AWG=20; 10 ft. overall length; BNC plug tachometer connector; C304 four socket connector for portable data collector; Break-away safety connector feature.

➤ **Compatible with:**

✓ vbClassic™

# Tachometer Extension Cable



CB105-C437-030-C438	Polyurethane jacketed cable, black, 4 conductor, .250" OD, 250 F, AWG=20; 30 ft. overall length; C438 four pin connector; C437 four socket connector.
---------------------	---

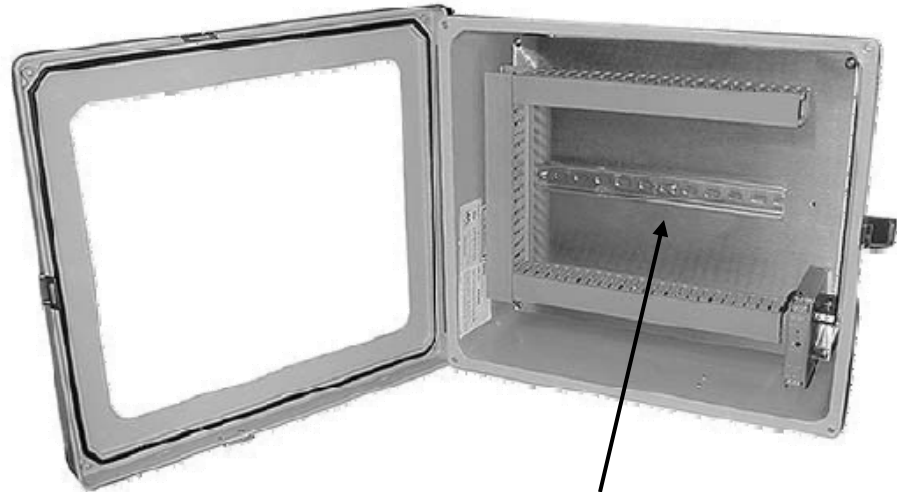
## ➤ Compatible with:

✓ vbClassic™



# vbOnline<sup>®</sup> Enclosure

- **PM110-32A**
  - ✓ User defined entry
- **PM110-32B**
  - ✓ Conduit entry (3x1.5")
- **PM110-32C**
  - ✓ Large cord grip entry (5x.75")
- **PM110-32D**
  - ✓ Individual cord grip entry (36x.5")



vbOnline<sup>®</sup> snaps  
on DIN rail,  
Power Supply  
included



# **vbOnline<sup>®</sup> Portable Case**

## ➤ **JBC199-116-1A**

- ✓ Water tight
- ✓ Wheels & Handle
- ✓ Open cover only



**Contact CTC  
for Details**



# *vbOnline<sup>®</sup> Portable Case*

## ➤ **JBC199-106**

- ✓ External inputs
- ✓ External power
- ✓ Cooling Fan
- ✓ Open or closed cover



# Mounting Hardware



QUICK DISCONNECTS

MOUNTING ADAPTERS/PADS

FIN MOUNT PADS

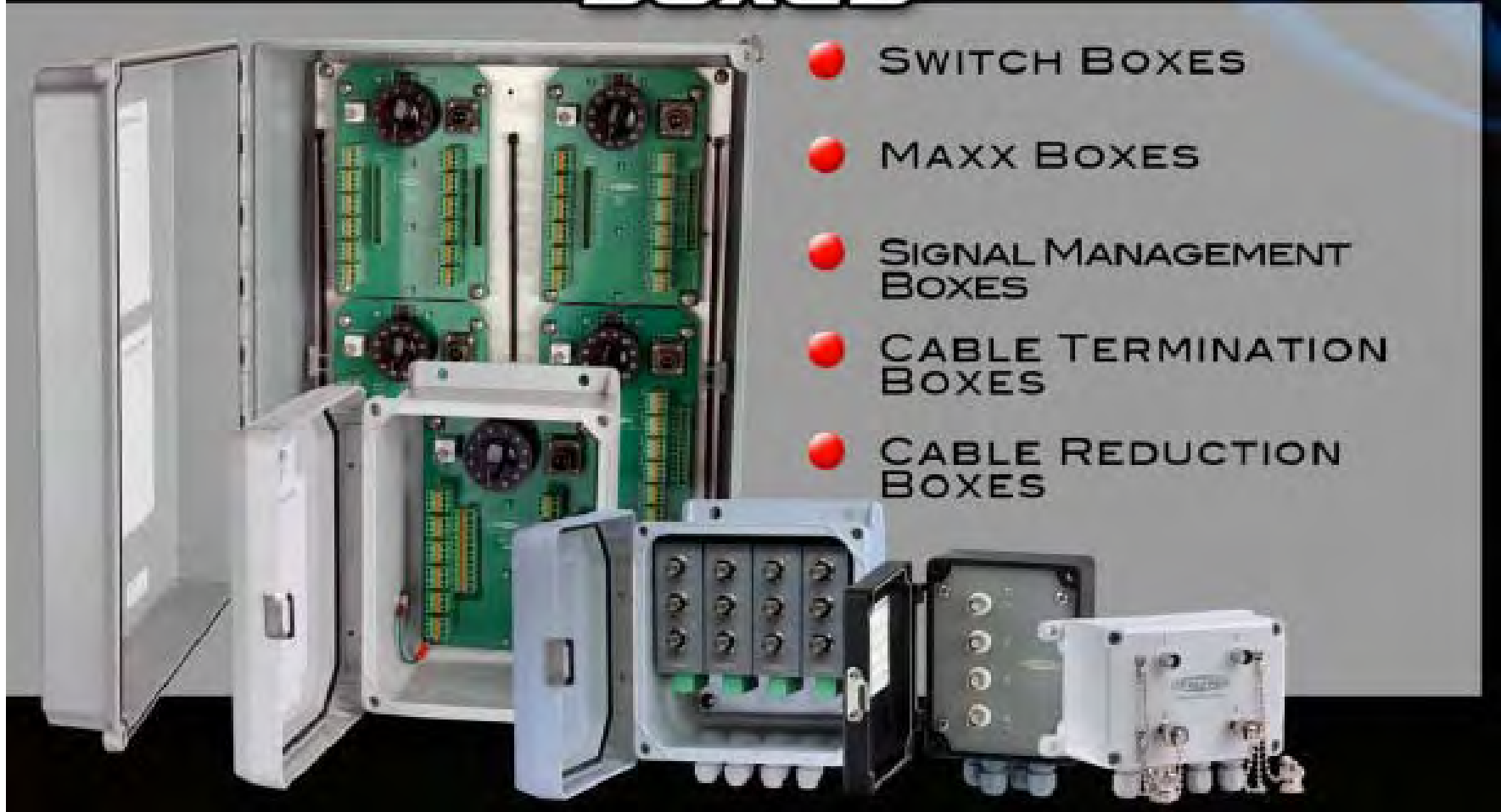
PROBE TIPS

FLAT SURFACE  
MAGNETIC BASES

MULTI-PURPOSE  
MAGNETIC BASES

INSTALLATION  
TOOL KITS

# Junction Boxes



- SWITCH BOXES
- MAXX BOXES
- SIGNAL MANAGEMENT BOXES
- CABLE TERMINATION BOXES
- CABLE REDUCTION BOXES



## VIBRATION ANALYSIS HARDWARE

Connection Technology Center, Inc.

7939 Rae Boulevard

Victor, New York, U.S.A.      14564

Tel: 1-585-924-5900

Fax: 1-585-924-4680

[sales@ctconline.com](mailto:sales@ctconline.com)

[www.ctconline.com](http://www.ctconline.com)

