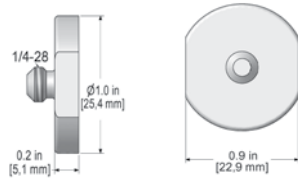


Mounting Pads/Magnet Targets

MH101-1B

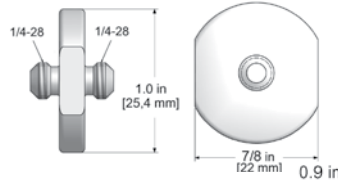


Stock Product

For Permanent Mount

- Simplifies installation of sensors
- 316L Stainless Steel
- Integral 1/4-28 stud for permanent mount using adhesive

MH138-1A

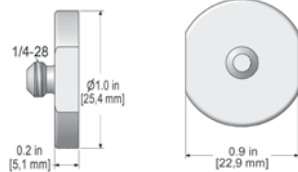


Stock Product

For Permanent Mount

- Simplifies installation of sensors
- 316L Stainless Steel
- 1/4 - 28 Integral Mounting Studs

MH102-1A Magnet Target

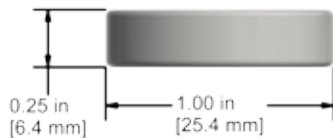


Stock Product

For Portable Route Measurements

- Stainless Steel magnet target with 1/4-28 integral stud
- Flat surface for improved vibration analysis magnet readings

MH133-1A Magnet Target



Stock Product

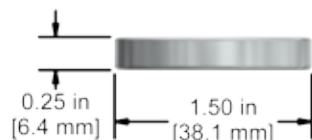
For Portable Route Measurements

- Ideal for walk-around routes, designed for repeatable data collection
- Laser etched for easy ID of "Vibration Test Point"

Features

- Low Cost Magnetic Stainless Steel Target
- Abraded adhesive mounting surface for superior bonding of adhesive to the pad

MH150-1A Magnet Target



Stock Product

For Portable Route Measurements

- Ideal for walk-around routes, designed for repeatable data collection
- Laser etched for easy ID of "Vibration Test Point"

Features

- Low Cost Magnetic Stainless Steel Target
- Abraded adhesive mounting surface for superior bonding of adhesive to the pad

MH151-1A Mounting Pad



Stock Product

For Permanent Mount

- Isolates sensor from electrical shock
- 1/4 - 28 tapped holes

Features

- Isolated up to 2,000 volts
- Durable stainless steel and epoxy construction