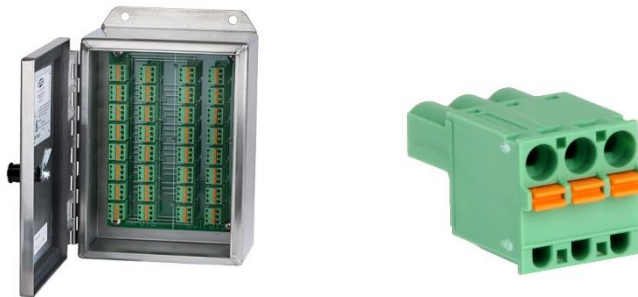




VIBRATION ANALYSIS HARDWARE

## CR202 Series Cable Reduction Boxes

The CR202 stainless steel reduction box can reduce the individual cables of up to 16 accelerometers to one multi-conductor cable. Input wiring from each sensor is connected to the box via quick release terminal blocks. Each terminal block includes three inputs – positive, negative and shield, which is earth grounded via the stainless steel enclosure. Corresponding output terminal blocks are marked within the enclosure and also feature three inputs – positive, negative and shield. Multi-conductor cabling with 8, 12 or 16 paired wires within a PVC jacket is wired to each output terminal block inside the enclosure. The cable exits through the bottom of the box as one single multi-conductor cable to provide input to a vibration switch box or MAXX box for data collection.



Input and output terminal blocks

All CR202 enclosures feature a hinged cover with a mounted twist lock to protect each terminal block when not in use. Rated for NEMA 4X (IP66), the box is resistant to hose directed fluid and corrosion and is rated for temperatures ranging from -58° to 180°F (-50° to 82°C). Cable input options for the CR202 include:



A. User Defined  
(Installed by user)



B. Conduit Fittings



C. Nylon Cord Grip Inputs  
Conduit Fitting Output



S. Stainless Steel  
Cord Grip Inputs,  
Conduit Fitting  
Output