



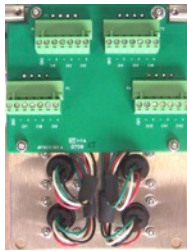
VIBRATION ANALYSIS HARDWARE

## MX303 24-48 Channel Series DLI-compatible MAXX Boxes

Designed for triaxial data collection, the MX303 fiberglass enclosure provides connection of the four-conductor input wiring for a maximum of 16 triaxial accelerometers for portable data collection. As an alternative, the MX303 can instead be manufactured to provide connection of the two-conductor input wiring of up to 48 single axis accelerometers or piezo velocity sensors. Data is collected via four, four-pin outputs compatible with Azima DLI Data Collector Cables. Input wiring from the sensors is wired to the outputs via terminal blocks located behind the hinged output panel. Inputs available on each terminal block include positive and negative for each axis or sensor signal, and one input for the shield drain wire that is grounded via an external ground stud mounted to the side of the fiberglass enclosure.



Four-pin  
Output  
Connectors

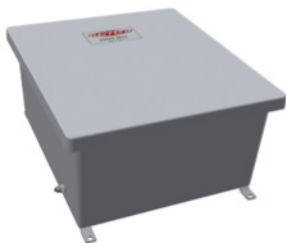


Terminal  
Block  
Inputs



Ground  
Stud

All MX303 enclosures feature a hinged cover with a mounted snap latch to protect each four-pin connector when not in use. Rated for NEMA 4X (IP66), the box is resistant to hose directed fluid and corrosion and is rated for temperatures ranging from -58° to 180°F (-50° to 82°C). Cable input options for the MX303 include:



A. User Defined  
(Installed by user)



B. Conduit Fitting



C. Nylon Cord Grips