



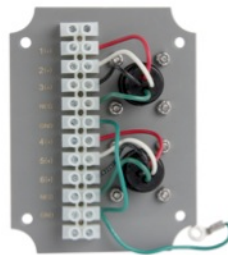
VIBRATION ANALYSIS HARDWARE

MX503 Series DLI-compatible Mini-MAXX Boxes

The MX503 is a powder-coated aluminum junction box that provides connection of the four-conductor input wiring of up to two triaxial accelerometers to a portable data collection unit equipped with Azima DLI Data Collector cables. Each sensor is wired to four-pin, quick output connections via an internal terminal strip located on the reverse side of the DLI-compatible connector panel. Connections on the terminal strip include an X, Y, and Z input for signal as well as common and the shield drain wire (earth grounded via the enclosure).

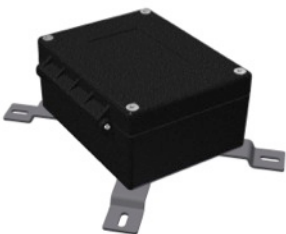


Four-pin Output Connectors

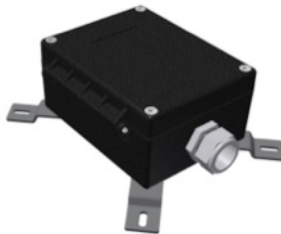


Input Terminal Strip

Each MX503 features a hinged cover with a snap latch to protect each four-pin connector when not in use. Located on the inside of the door is a measurement location card used to identify and label each connector. Rated for NEMA 4X (IP66), the box is also resistant to hose directed fluid and corrosion and is rated for temperatures ranging from -58° to 180° F (-50° to 82° C). This mini-MAXX box measures 3.54" W x 4.53" H (89.9 mm W x 115.1 mm H), allowing it to be installed in many locations, requiring little space. Cable input options for the MX503 include:



A. User Defined
(Installed by user)



B. Conduit Fitting



E. Nylon Cord Grips