

ACCELEROMETER PROTECTORS FOR INDUSTRIAL APPLICATIONS



**WHEN RELIABILITY MATTERS
CONNECT TO CONFIDENCE**

In industrial environments, many situations arise where extra protection for instrumentation is required. CTC has developed two styles of sensor protection for scenarios in which additional protection is needed.

Protection for Top Exit Sensors

CTC's **MH152-1A** top exit sensor protector is designed for use in harsh industrial environments where falling debris, caustic chemicals or other non-explosive hazards may occur.

Consisting of a two-part aluminum housing with three mounting holes for the base, the accelerometer protector is assembled easily in the field. Viton® seals resist dirt and corrosive chemicals. The top of the sensor protector is equipped with wrench flats in order to secure the two primary pieces together. A single 3/4-14 NPT plug is included with the housing for applications where two exits from the housing are not required.

The MH152-1A is sized so as to be able to easily accommodate all of the standard types of CTC top exit sensors, from our smallest AC140-1D sensor up to our tallest LP800 and LP900 series sensors.



***MH152-1A
Protective accelerometer housing
fully assembled except for the
optional conduit. Two conduit
access points are available, one
on each side of the protective
housing.***

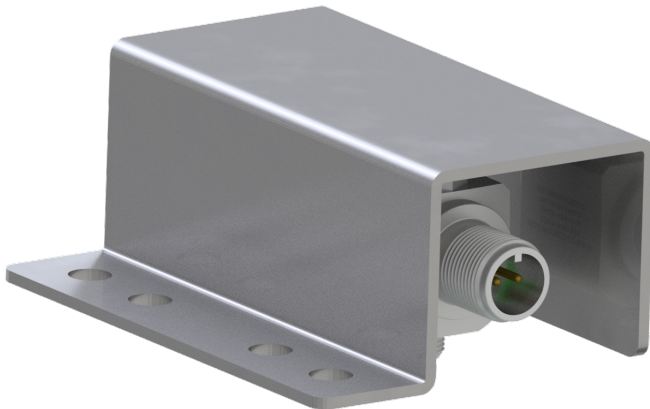


***Cutaway rendering of the
MH152-1A, showing the sensor
installed in the housing.***

Protection for Side Exit Sensors

The **MH148-1A** side exit sensor protector is intended for use in areas where the aluminum housing of the MH152-1A is not appropriate, or a side exit sensor must be used.

Made from 316 stainless steel, the MH148-1A is open at both ends for easy access to the sensor connection. Frequently employed in the mining industry, the sensor protectors are extremely durable and resistant to rust as well as the falling debris frequently found in mining applications.



Rendering of the MH148-1A side exit sensor protector showing the four holes for ease of installation. Made from durable 316 stainless steel.

