

CTC AppNotes

A series of technical documents written by members of the CTC community

Accelerometer Protectors for Industrial Applications

In the industrial world many situations arise where extra protection for instrumentation is required. For situations like this CTC has developed 2 styles of sensor protection.

Protection for Top Exit Sensors

CTC's new MH152-1A top exit sensor protector

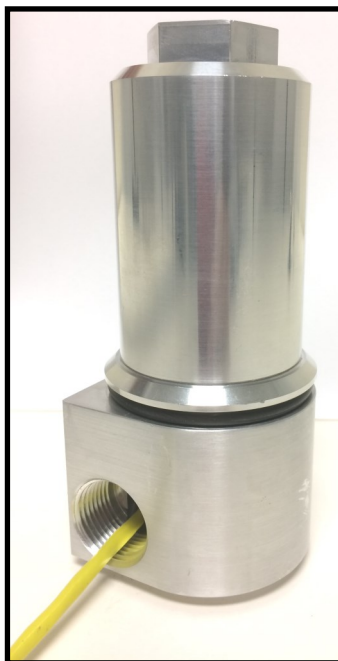


Figure 1. MH152-1A Protective accelerometer housing fully assembled except for the optional conduit. Two conduit access points are available, one on each side of the protective housing

is designed for use in harsh industrial environments where falling debris, caustic chemicals or other non explosive hazards may occur. Consisting of a 2 part aluminum housing with 3 mounting holes for the base, the accelerometer protector is assembled easily in the field. Viton seals resist dirt and corrosive chemicals. The top of the sensor protector is equipped with wrench flats in order to secure the 2 primary pieces together. A single 3/4-14 NPT plug is included with the housing for applications where two exits from the housing are not required. The MH152-1A is sized so as to be able to easily accommodate all of the standard types of CTC and PRO top exit sensors from our smallest AC140-1D sensor up to the tallest LP800 and LP900 series sensors.

Protection for Side Exit Sensors

The MH148-1A side exit sensor protector is intended for use in areas where the aluminum

housing of the MH152-1A is not appropriate, or a side exit sensor must be used. Made from 316 stainless, the MH148-1A is open at both ends for easy access to the sensor connection. Frequently employed in the mining industry, the sensor protectors are extremely durable and resistant to rust as well as the falling debris frequently found in mining applications.



Fig. 2. Cutaway rendering of the MH152-1A showing the sensor installed in the housing.

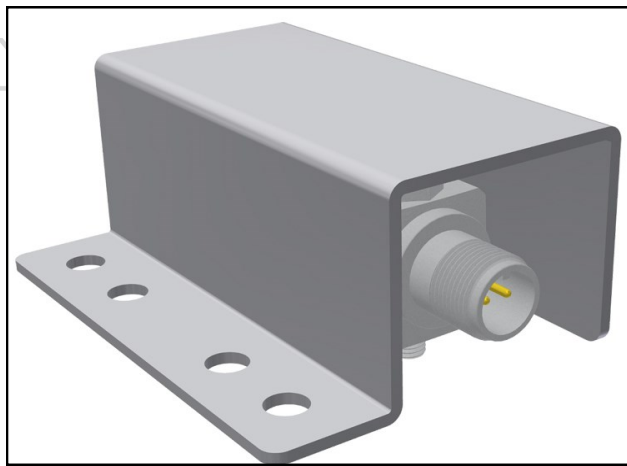


Figure 3. Rendering of the MH148-1A side exit sensor protector showing the four holes for ease of installation. Made from durable 316 stainless steel.

If you have any questions feel free to contact CTC directly. Call toll free 1-800-999-5290 in the US/Canada or +1-585-924-5900 internationally, or alternatively, email techsupport@ctconline.com.

**

If any CTC vibration analysis hardware product should ever fail, we will repair or replace it at no charge.