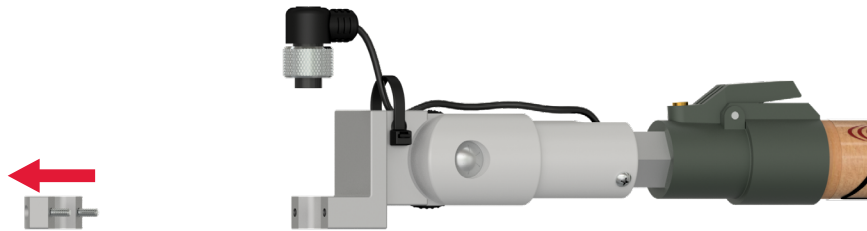


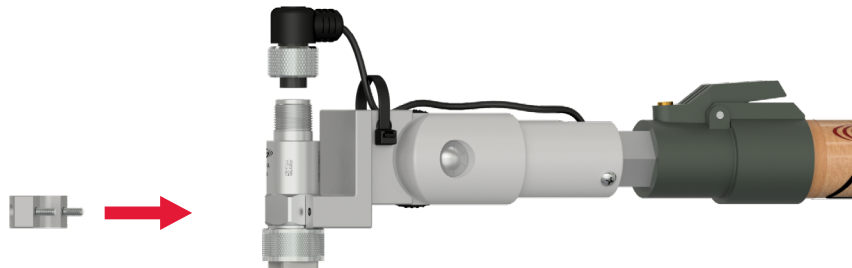
1. Attach the top exit, single axis accelerometer to mounting magnet.
*Sensors and magnet sold separately.



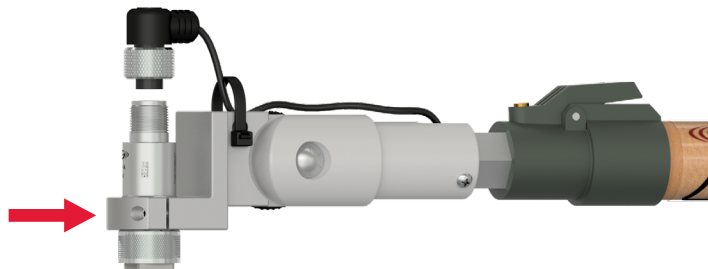
2. Using the included 7/64 in. Allen wrench, loosen the screws and remove the front portion of the grip.



3. Place the hex faces on the base of the accelerometer into the opening of the grip.



4. Replace the front of the grip and tighten screws.



5. Attach the A2U connector to the threaded barrel of the accelerometer, and tighten down cable tie and clip off loose end.

