

CTC AppNotes

A series of technical documents written by members of the CTC community

PRO Enclosures for Loop Powered Proximity Probes

CTC's most recent product development in proximity probes is the release of 4-20 mA loop powered drivers. These drivers are available for multiple applications where continuous monitoring is recommended. As with all of the PRO series enclosures, the focus of the design process is on ease of installation and user friendly, "turn-key" operation.



Figure 1—CTC's PXE150T proximity probe driver enclosure for use with 4-20 mA proximity probe drivers. Note the internal tie-downs to hold excess proximity probe cables.

The new series of 4-20mA loop powered drivers do not require a power source other than the power provided from the PLC or DCS system on the monitoring loop, so no internal power supply is provided with the PXE150T enclosures .

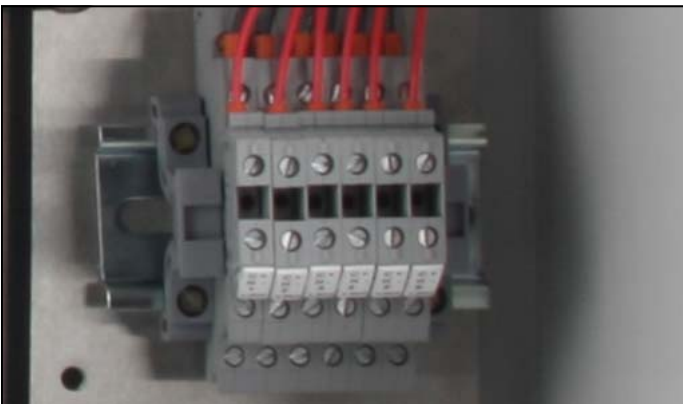


Figure 2— The PXE150T enclosures are available in 1 to 6 channel configurations, each channel is supported near the lower right corner by an individually labeled terminal block where the loop powered wires from the PLC or DCS can be conveniently connected.

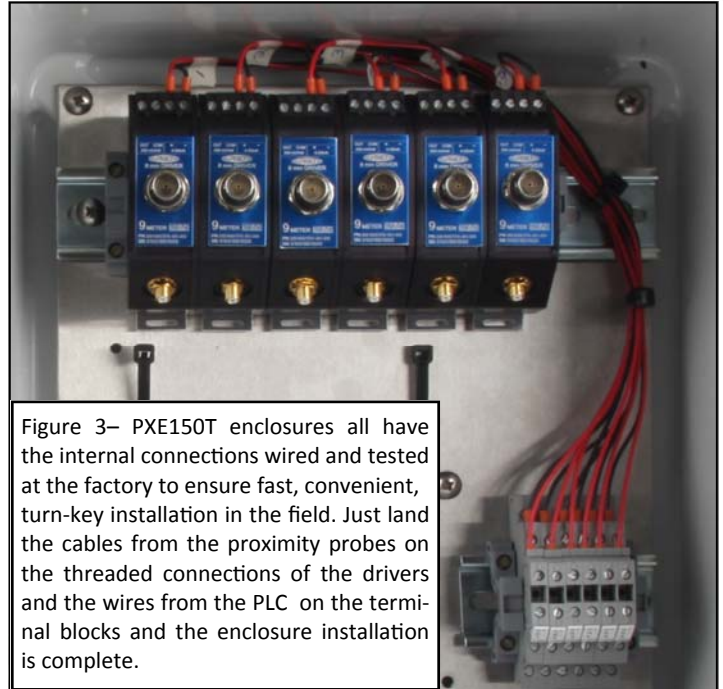


Figure 3— PXE150T enclosures all have the internal connections wired and tested at the factory to ensure fast, convenient, turn-key installation in the field. Just land the cables from the proximity probes on the threaded connections of the drivers and the wires from the PLC on the terminal blocks and the enclosure installation is complete.

As the internal connections in the PXE150t are all made at the factory, field installation of the enclosures is extremely simple. After the enclosure is properly mounted on the wall or other suitable surface, just land the probe cables on the drivers and the 4-20 mA connections on the terminals provided and the installation is complete.

The PXE150 T enclosures are intended for use with Pro 4-20 mA drivers—the driver series include: DD100170, DD100190, DD100191, DD100770, DD100790, DD100791, DD100870, DD100890, DD100891, DD100970, DD100990, DD100991, and Bently compatible drivers DX330170, DX330190, DX330191, DX770, DX790, DX791, DX870, DX890, DX891, DX970, DX990, and DX991.



Figure 4— CTC's 4-20 mA driver has the same fit and form factor as the standard dynamic vibration driver

If you have any questions or for further information please contact us via email, techsupport@ctconline.com or call 1-800-999-5290 in the US and Canada or +1-585-924-5900 internationally.