

# CTC

CONNECTION TECHNOLOGY CENTER



SHORT FORM CATALOG

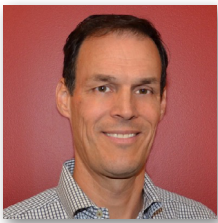


## Who We Are

At CTC, we are a family-owned and operated business passionate about providing the best quality products backed by excellent customer service. We are the industry leader in quick delivery for stock and built-to-order products. All CTC products are proudly made or assembled in the U.S.A. We always honor our best-in-class warranties, and our customer service seeks to provide the best customer experience in the world.

## What We Do

CTC is the world leader in the design and manufacture of industrial accelerometers, piezo velocity transducers, 4-20 mA vibration sensors, and proximity probes as well as all related mounting hardware, cabling, and junction boxes. Our products enable efficient vibration monitoring for predictive maintenance in a wide variety of industries. Industries served include cement, mining, petrochemical, food and beverage, auto, steel, wind, paper, power generation, water and wastewater treatment, pharmaceutical, hospitals, bottling, and more. Our mission is to offer the most extensive collection of accelerometers and vibration analysis hardware products, as well as the tools for installation. Our products are compatible with multiple third-party data collectors and online monitoring systems.



A handwritten signature in black ink that reads "Todd Cook".

**TODD  
COOK**  
Co-Owner



A handwritten signature in black ink that reads "Laura A. Cook".

**LAURA  
COOK**  
Co-Owner



A handwritten signature in black ink that reads "Andrew Cook".

**ANDREW  
COOK**  
VP of Business  
Development



A handwritten signature in black ink that reads "Charlotte Cook".

**CHARLOTTE  
COOK**  
Director of Marketing  
and Engineering

# CONTENTS

<b>CTC</b> .....	<b>4</b>
New Product Announcements .....	4
Multipurpose Accelerometers.....	5
Ultrasound Sensors.....	6
High-Temperature Accelerometers .....	6
Cost Effective Molded Accelerometers.....	7
Temperature & Vibration Sensors .....	8
Hazardous Rated Accelerometers.....	8
Multi-Axial Accelerometers .....	9
Cables.....	10
Connectors.....	11
Adapters & Accessories .....	13
Junction Boxes.....	15
Mounting Hardware .....	17
4-20 mA Hardware .....	20
Signal Conditioners .....	21
<b>PRO</b> .....	<b>22</b>
Proximity Probes.....	22



## Product Offerings

At CTC, we offer two comprehensive product lines to meet your industrial vibration monitoring needs. Our products reflect the input from customers and distributors around the world and are designed and tested to meet the real-world demands of plant environments. We believe our products are the highest quality on the market, which is why we back each product line with our best-in-class warranties.



VIBRATION ANALYSIS HARDWARE

The CTC product line features vibration analysis hardware for heavy industry.

All CTC products are backed by our unconditional lifetime warranty. If any CTC product should ever fail, we will repair or replace it at no charge.



The PRO line offers complete proximity probe systems compatible with all standard condition monitoring software.

All PRO products are backed by a lifetime warranty on materials and workmanship. CTC will repair or replace any PRO products as long as the product was not subjected to misuse, neglect, natural disasters, improper installation, or modification.

## Refund Policy

All stock products may be returned for a 25% restocking fee if returned in new and unused condition within 90 days of shipment. Built-to-order and private-label products qualify for a 50% refund if returned in new and unused condition within 90 days of shipment. Custom products are quoted and built specifically to the requirements of the customer, which may include completely custom product designs or private-labeled versions of standard products for OEM customers. Custom products ordered are non-cancellable, non-returnable, and non-refundable.

# New to the CTC Family



## Dual Output Vibration & Temperature Triax Sensors

- 100 mV/g, 500 mV/g or 100 mV/in/sec
- Side exit
- Simultaneously monitor three axes of data with additional temperature output
- Premium 5% and low cost 15% sensitivity tolerance options available

## MCB360 and MEB360 Swivel Mount Accelerometer

- 10 mV/g and 100 mV/g options
- Side exit, integral cable
- Designed for areas with small spacing tolerance - simply swivel the cable towards the exit and tighten the nut to lock the accelerometer in place
- Premium 5% and low cost 15% sensitivity tolerance options available



Backed by our Unconditional Lifetime Warranty!

[www.ctconline.com](http://www.ctconline.com)

585-924-5900

CTC offers a complete line of industrial accelerometers. Our ruggedized industrial accelerometers are available in single axis, biaxial, and triaxial designs. Many configurations allow for either top or side exit options. Side exit configurations are suitable for installations in areas where height is an issue. CTC's industrial accelerometers support a diverse set of applications with sensitivity values ranging from 10 mV/g to 1000 mV/g. Dual output configurations allow for vibration and temperature outputs.

### Multipurpose Accelerometer, Top Exit



STANDARD SIZE



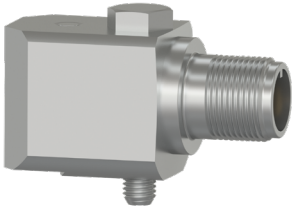
COMPACT SIZE



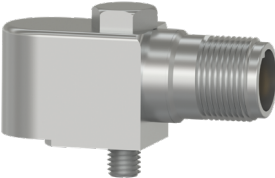
MINI SIZE



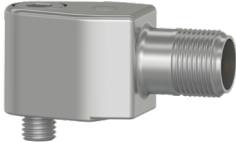
### Multipurpose Accelerometer, Side Exit



STANDARD SIZE



COMPACT SIZE



MINI SIZE



ACCELEROMETERS

Multipurpose Accelerometer, Integral Cable Options



STANDARD INTEGRAL ARMORED INTEGRAL

FEP JACKETED

HEAVY DUTY ARMORED

ULTRASOUND

Ultrasound Sensors



Sensitivity: 100 mV/g  
Resonant Peak: 42 kHz

UEB332/UEA332

Dynamic IEPE vibration and ultrasound accelerometer with high amplitude resonance peak for stress wave measurements

HIGH-TEMPERATURE

High-Temperature Resistance Accelerometers



AC207/AC208  
100 mV/g  
Max Temp: 325 °F (162 °C)



TXEA331-HT  
100 mV/g  
Triax Sensor  
Max Temp: 325 °F (162 °C)



TR207-M12/TR208-M12  
100 mV/g  
RTD Sensors  
Max Temp: 325 °F (162 °C)



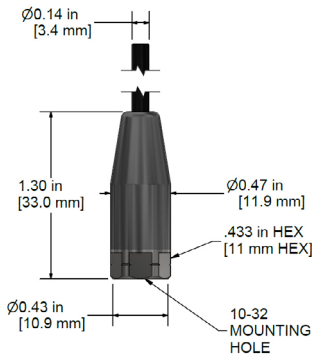
Backed by our Unconditional Lifetime Warranty!

www.ctconline.com

585-924-5900

## Cost Effective Molded Sensors

featuring a fully-molded design



These miniature sensors are ideal for applications with limited clearance, limited mounting surface space, or submersible applications. The minimal form factor and excellent frequency response allow this sensor to be used in a wide variety of applications.



**MCB211**  
High Frequency  
10 mV/g



**MEB210**  
General Purpose  
100 mV/g



**MEB211**  
High Frequency  
100 mV/g



Backed by our Unconditional Lifetime Warranty!

[www.ctconline.com](http://www.ctconline.com)

585-924-5900



## Dual Output Temperature and Vibration Sensors



**TA202**  
100 mV/g  
10 mV/°C  
Temp Range:  
-40 °F to 250 °F  
(-40 °C to 121 °C)



**TA204**  
100 mV/g  
10 mV/°C  
Temp Range:  
-40 °F to 250 °F  
(-40 °C to 121 °C)



**TR102-M12A**  
100 mV/g  
PT100 RTD  
Temp Range:  
-40 °F to 250 °F  
(-40 °C to 121 °C)



**TR104-M12A**  
100 mV/g  
PT100 RTD  
Temp Range:  
-40 °F to 250 °F  
(-40 °C to 121 °C)

## Hazardous Rated Accelerometers

CTC offers a variety of single axis, biaxial, triaxial, dual output, and low capacitance sensors certified for Class I Division 2 (ATEX/IECEX Zone 2), as well as intrinsically safe protection methods under Class 1 Division 1 (ATEX/IECEX Zone 0/1).

### Hazardous Ratings



**PESO**



**ANZEx**



**Backed by our Unconditional Lifetime Warranty!**

[www.ctconline.com](http://www.ctconline.com)

585-924-5900

## New Triaxial Accelerometers



**TXEA331-TA**  
Dual Output Triax  
Acceleration & Temperature  
100 mV/g  
10 mV/°C



**TXEA331-VT**  
Dual Output Triax  
Velocity & Temperature  
100 mV/in/sec  
10 mV/°C



**TXGA331**  
Premium  
Low Frequency  
1000 mV/g

## Other Popular Triaxial Accelerometers



**AC115**  
Low Cost  
Standard Size  
100 mV/g



**TREA330**  
Premium  
Compact Size  
100 mV/g



**TCEB331**  
Premium  
Circular Shape  
100 mV/g



**TXFA331**  
Premium  
Low Frequency  
500 mV/g

## Popular Biaxial Accelerometers



**AC119**  
Low Cost  
Biaxial with X & Z Axis  
100 mV/g



**AC979**  
Intrinsically Safe  
Biaxial with X & Z Axis  
100 mV/g



**BSFA333-IV**  
Inverse Voltage  
Biaxial with X & Z Axis  
100 mV/g

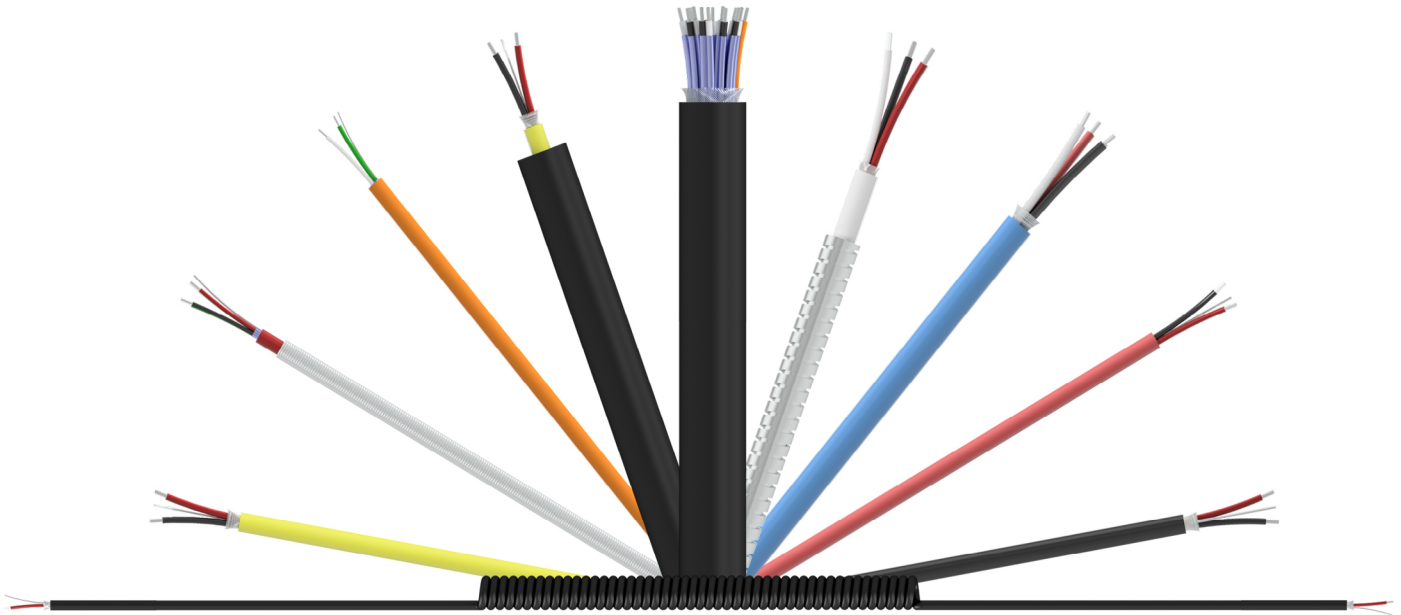


Backed by our Unconditional Lifetime Warranty!

[www.ctconline.com](http://www.ctconline.com)

585-924-5900

## CTC Offers a Variety of Cable Options for All Application and Environmental Criteria



### JACKET TYPES

- Fluorinated Ethylene Propylene (FEP)
- Polyurethane
- Lightweight Polyurethane
- PVC
- Thermoplastic Elastomer (TPE)
- Low Smoke Zero Halogen

### ARMOR OPTIONS

- Stainless Steel Braided Sheathing
- Stainless Steel Armor
- Hydraulic Hose Armor

### CONDUCTOR OPTIONS

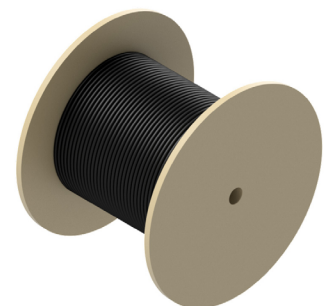
- 2 Conductor
- 3 Conductor
- 4 Conductor
- 6 Conductor

### HAZARDOUS ZONE OPTIONS

- Class 1 Division 2 Approved Cables

### LOW COST CABLE REELS

Bulk Cable Options Available in 1000 ft Reels



Backed by our Unconditional Lifetime Warranty!

[www.ctconline.com](http://www.ctconline.com)

585-924-5900

## CTC Offers a Variety of Standard and Specialty Connectors for Every Possible Application

CTC sensor connectors support temperatures ranging from -58 °F to 325 °F (-58 °C to 162 °C). A wide selection of connectors supporting IP (Ingress Protection) ranging from IP66 to IP68 is available.

### A SERIES: MIL STYLE (C-5015) COMPATIBLE CONNECTOR



#### Connector Options

- Straight or Right Angle Connectors
- Hydraulic Hose Sleeve Available
- Available in 2 and 3 Live Socket Configurations

#### Material Options

- Polycarbonate
- Polyurethane
- Nylon
- PPS

### J SERIES: MINI-MIL STYLE CONNECTOR



#### Connector Options

- Straight Connector
- Strain Relief Available
- Class 1 Division 2 Rated
- Available in 2 and 4 Live Socket Configurations

#### Material Options

- Polycarbonate
- Nylon
- Polyurethane
- Viton®
- PPS

### K SERIES: MIL STYLE (C-5015) COMPATIBLE CONNECTOR



#### Connector Options

- Straight Connector
- Strain Relief
- Grounded Backshell
- Available in 2 and 3 Live Socket Configurations

#### Material Options

- Polyurethane

### M SERIES: M12 MOLDED CONNECTOR



#### Connector Options

- Straight Connector
- Strain Relief Available
- Available in 2, 3, 4, and 5 Live Socket Configurations

#### Material Options

- Nylon
- Polycarbonate
- Polyurethane

### V SERIES: VITON® PROTECTIVE BOOT COVER



#### Connector Options

- Straight Connector
- Available in 2, 3, or 4 Live Socket Configurations

#### Material Options

- Viton® Seal with
  - Nylon Insert Option
  - PPS Insert Option

Many other options for cabling and connectors are available. Please [visit our website](#) for more details.



Backed by our Unconditional Lifetime Warranty!

[www.ctconline.com](http://www.ctconline.com)

585-924-5900

## Data Collector Cord Sets

CTC offers a variety of OEM replacement data collector cables and portable cable options for all major vibration analyzer manufacturers. Data collector cables are available in both coiled and straight cable options. Replacement cable assembly and adapters are available for every major data collector including:

ACOEM, ADASH Ltd., AES Reliability, Azima/Symphony Industrial AI, Betavib, Bently Nevada/Baker Hughes/Commtest, Emerson/CSI, Entek/Rockwell, Erbesed, Pruftechnik, Schenk, SDT, SEMAPI, SKF, SPM, and Windrock.

## Popular Data Collector Connectors



**EMERSON/CSI**

**C555**

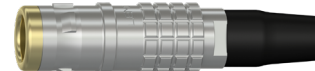
Channel A Acceleration  
Input to Emerson 2130 &  
2140



**ACOEM**

**C494**

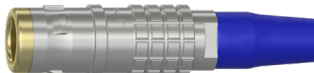
Single Channel Input for  
Falcon Data Collectors



**BENTLY NEVADA/BAKER  
HUGHES/COMMTEST**

**C416**

Triaxial Input X, Y and Z for  
VB Series



**ENTEK/ROCKWELL**  
**C22**

Single Channel Input for  
Datapac



**PRUFTECHNIK**  
**C618**

Single Channel Input to  
VIBXpert II



**SKF**  
**C66**

Channel A Input for  
CMXA and DLI/DCA Series

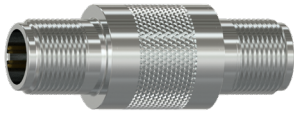


Backed by our Unconditional Lifetime Warranty!

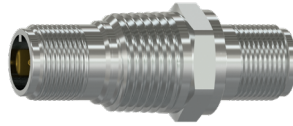
[www.ctconline.com](http://www.ctconline.com)

585-924-5900

## Popular Adapters



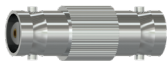
**CB901-1A**  
2 Pin MIL to 2 Pin MIL  
In-Line Feedthrough



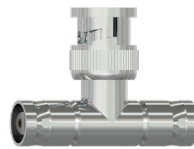
**CB903-1A**  
2 Pin MIL to 2 Pin  
MIL Bulkhead  
Feedthrough, 1/2-NPT



**CB908-1A**  
2 Pin MIL to BNC  
Plug Adapter  
with Overmolded  
Reinforcement



**CB910-1A**  
In-Line BNC Jack to  
BNC Jack Adapter



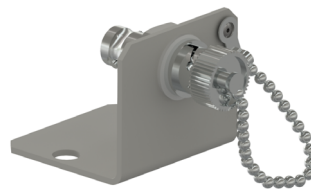
**CB911-1A**  
BNC "T" Adapter



**CB911-3A**  
In-Line BNC Plug to  
BNC Plug Adapter



**CB912-1A**  
2 Socket MIL to  
BNC Plug Adapter  
with Overmolded  
Reinforcement



**CB917-1A**  
BNC Connector with  
Mounting Bracket



**EMPP**  
Molded BNC Jack  
Connector with Nylon  
Protective Cover

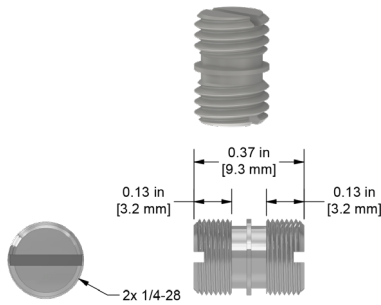


Backed by our Unconditional Lifetime Warranty!

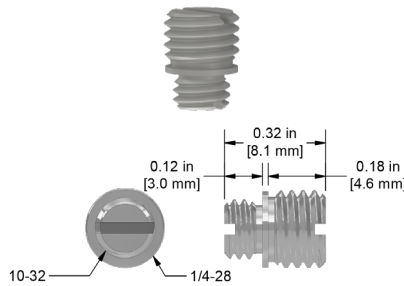
[www.ctconline.com](http://www.ctconline.com)

585-924-5900

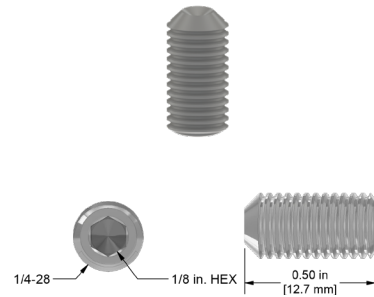
**Specialty Mounting Adapters & Studs**



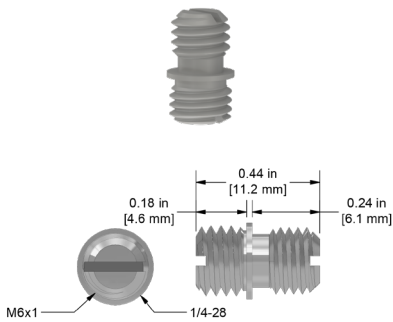
**MH108-1B**  
1/4-28 to 1/4-28  
Mounting Stud  
Stainless Steel



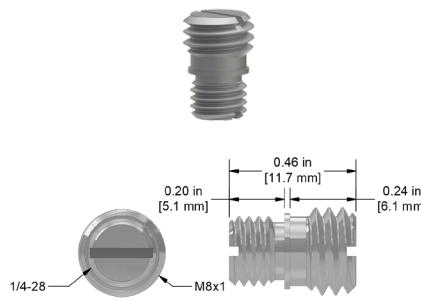
**MH108-3B**  
1/4-28 to 10-32  
Adapter Stud  
Stainless Steel



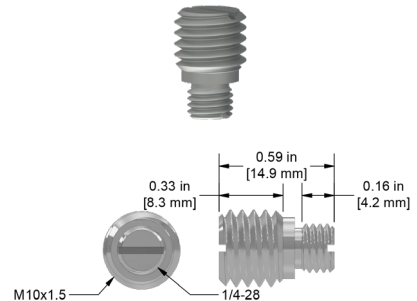
**MH108-4B**  
1/4-28  
Mounting Screw  
Stainless Steel



**MH108-5B**  
1/4-28 to M6x1  
Adapter Stud  
Stainless Steel

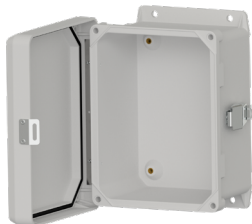


**MH108-6B**  
1/4-28 to M8  
Adapter Stud  
Stainless Steel

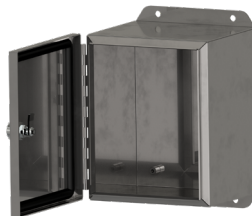


**MH108-7B**  
1/4-28 to M10x1.5  
Adapter Stud  
Stainless Steel

**Empty Enclosures & Replacement Boards**



**JBA0608-FG**  
Empty Fiberglass  
Enclosure  
6 in. x 8 in. x 4 in.



**JBA0608-SS**  
Empty Stainless  
Steel Enclosure  
6 in. x 8 in. x 4 in.



**JB900 SERIES**  
Single Axis,  
Multichannel Switch  
Box PC Boards



**Backed by our Unconditional Lifetime Warranty!**

[www.ctconline.com](http://www.ctconline.com)

585-924-5900

At CTC, we offer the widest variety of junction boxes in the world. Our junction box solutions allow for the monitoring of remotely mounted vibration sensors, which would be otherwise restricted to human access due to safety considerations. Also offered is a selection of low-cost cable termination boxes that allow multiple measurement points to be routed to a single location to gather data. Many CTC junction boxes offer continuous output options for direct interface to online monitoring systems.

### Premium JB Series Switch Boxes

Fully featured NEMA 4X (IP66) rated vibration junction box with IEPE sensor condition indicator lights and convenient interface with fold-forward panel for easy wiring. Compatible with single axis, biaxial, and triaxial inputs.



**JB100/JB200  
STANDARD SIZE**

Fiberglass or Stainless Steel, Input Options:  
4 to 12 Sensors



**JB100/JB200  
EXTENDED CAPACITY**

Fiberglass or Stainless Steel, Input Options:  
24 to 48 Sensors



**JB300 SERIES  
SLOPE TOP**

Stainless Steel Slope Top, Input Options:  
4 to 12 Sensors

---

### Legacy Switch Boxes



**SB102/SB202/SB262  
STANDARD SIZE**

Fiberglass, Stainless Steel, or Stainless Steel Slope Top, Input Options:  
4 to 12 Single Output Sensors



**SB142/SB242/SB282  
STANDARD SIZE**

Fiberglass, Stainless Steel, or Stainless Steel Slope Top, Input Options:  
4 to 8 Dual Output Sensors



**SSB-MODX**

Single Axis Switch Module, DIN Rail Mountable, Input Options:  
4 to 12 Single Output Sensors



Backed by our Unconditional Lifetime Warranty!

[www.ctconline.com](http://www.ctconline.com)

585-924-5900



## Cable Termination and Enclosed BNC Connection Boxes



**CT101**

Cable Termination Boxes, Input Options: 1 to 4 Single Output Sensors



**MMX-MOD3**

DIN Rail Mountable, MAXX Box BNC Connection Module, 3 BNC Jacks



**MX102/MX202**

Fiberglass or Stainless Steel MAXX Boxes, Input Options: 1 to 12 Single Output Sensors

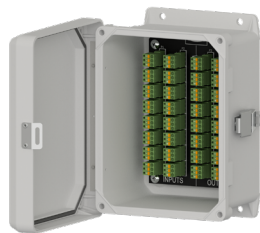


**MX502**

Aluminum Mini-MAXX Boxes, Input Options: 1 to 4 Single Output Sensors

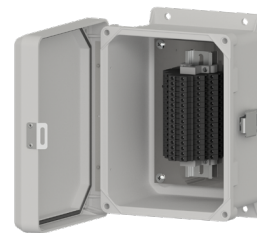
## Cable Reduction Boxes

CTC cable reduction boxes reduce the input cabling of up to 16 individual sensors into one multiconductor cable. Utilizing a cable reduction box can significantly reduce cabling costs for applications with long cable runs. Fiberglass and stainless steel options are available.



**CR102/CR202**

Fiberglass or Stainless Steel, Input Options: 8, 12, and 16 Channels  
-58 °F to 180 °F  
(-50 °C to 82 °C)



**CRHT102/CRHT202**

Fiberglass or Stainless Steel, High Temperature, Input Options: 12 and 16 Channels  
-40 °F to 212 °F  
(-40 °C to 100 °C)



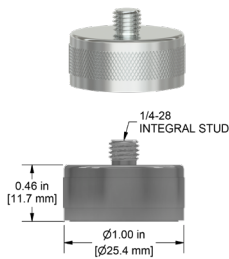
Backed by our Unconditional Lifetime Warranty!

[www.ctconline.com](http://www.ctconline.com)

585-924-5900

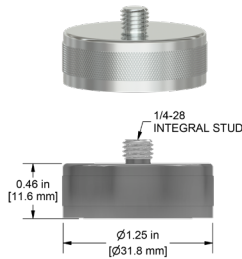
CTC offers a variety of adhesive and stud mounted sensor mounting pads. Magnet mounting pad options for portable field applications are also available, including flat and two rail mounting configurations. Additionally, we offer specialty mounting accessories for fin-cooled motors as well as a variety of mounting probe tips, which allow access to traditionally hard-to-reach bearing locations. Visit our website for a complete list of our mounting hardware solutions.

**Rare Earth Magnetic Bases**  
made from Neodymium Iron Boron



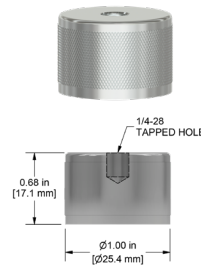
**MH103-1B**

Flat Surface,  
Pull Strength:  
40 lbs/18 kg



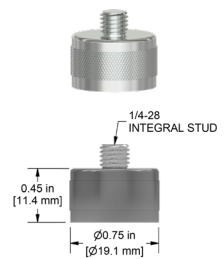
**MH104-1B**

Flat Surface,  
Pull Strength:  
60 lbs/27 kg



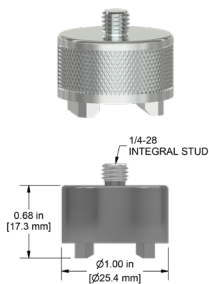
**MH122-1A**

Flat Surface,  
Pull Strength:  
40 lbs/18 kg



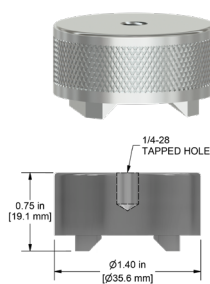
**MH136-1A**

Flat Surface,  
Pull Strength:  
25 lbs/11 kg



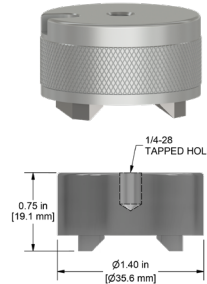
**MH112-1A**

Multipurpose,  
Pull Strength:  
30 lbs/14 kg



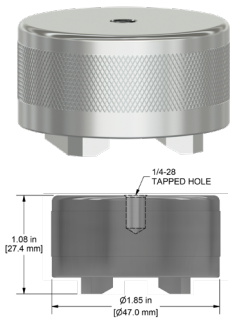
**MH114-3A**

Multipurpose,  
Pull Strength:  
50 lbs/23 kg



**MH114-3T**

Multipurpose,  
Pull Strength:  
50 lbs/23 kg



**MH115-2A**

Multipurpose,  
Pull Strength:  
95 lbs/43 kg



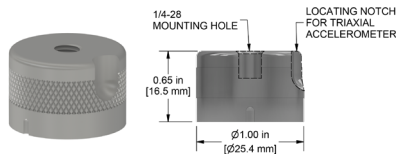
**Backed by our Unconditional Lifetime Warranty!**

[www.ctconline.com](http://www.ctconline.com)

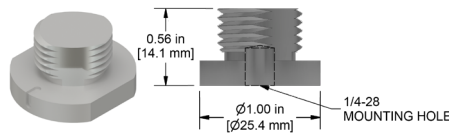
585-924-5900

## Accelerometer Quick Disconnects

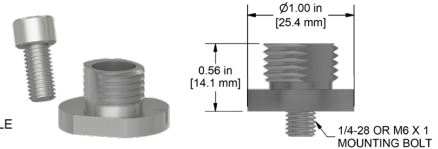
CTC's quick disconnects are ideally suited for triaxial sensor use. The permanently mounted stud creates a consistent mounting location for portable routes. The receptacle features a triaxial locating notch and 1/4 turn engagement onto the stud, ensuring the sensor is oriented in the same position for every reading.



**MH107-1A**

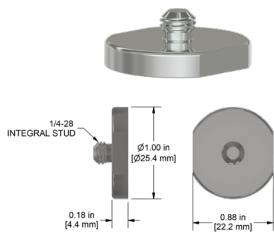


**MH107-1B**

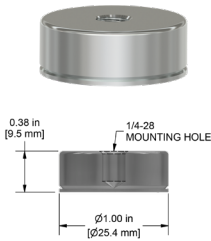


**MH107-2B**

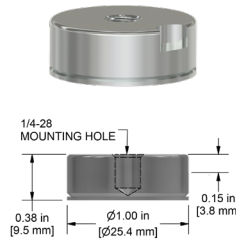
## Mounting Pads/Magnet Targets



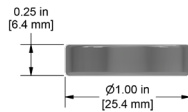
**MH101-1B**



**MH130-1A**

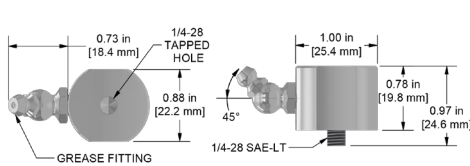


**MH130-1T**

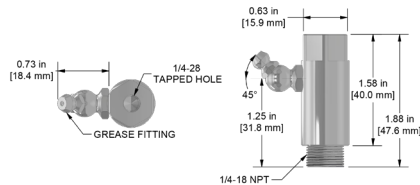


**MH133-1A**

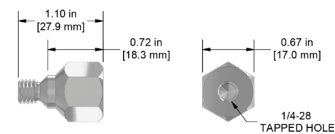
## Zerk and Specialty Mounting Adapters



**MH134-1B**  
Zerk Adapter  
1/4 - 18 NPT  
Mounting Thread



**MH134-4B**  
Zerk Adapter  
1/4 in. SAE-LT  
Mounting Thread



**MH143-1A**  
Hex Head Mounting Stud  
for Accelerometers,  
SPM Compatible



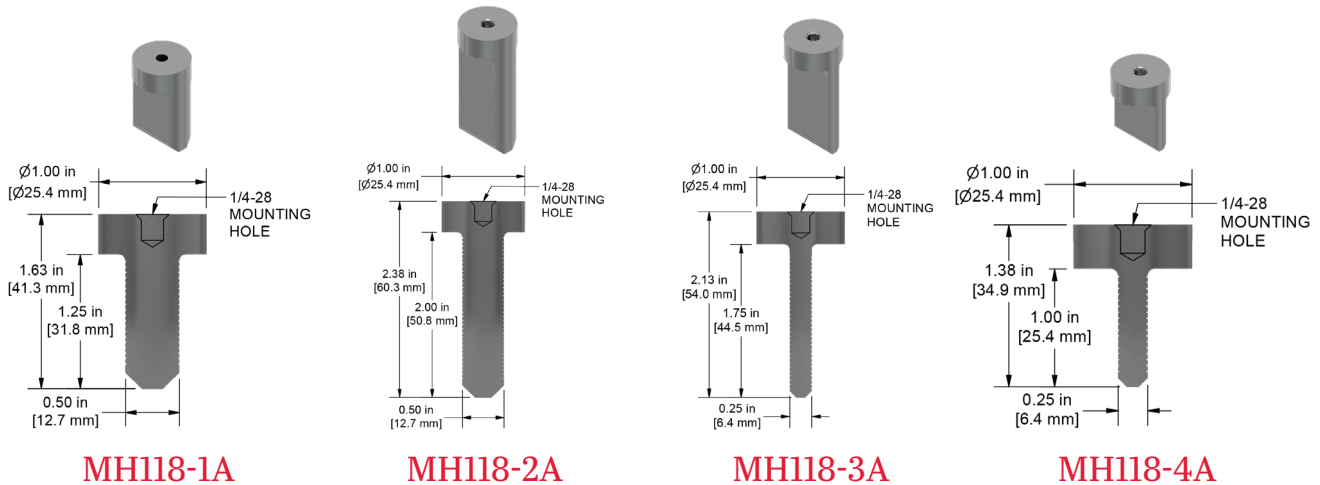
Backed by our Unconditional Lifetime Warranty!

[www.ctconline.com](http://www.ctconline.com)

585-924-5900

## Motor Fin Probe Pads

Take measurements from hard-to-reach places.



Our fin mount probes are perfect for narrow measurement points in motors, turbines, and other machinery. Fin mounts can be used for portable route measurements or permanently mounted accelerometers.

## Accelerometer Installation Tool Kit



### MH117 SERIES

Spot Face and Pilot Hole Drill in One Operation.  
Option for Taps and Ratcheting Tap Handle Included.

### High Speed Steel End Mill Tool Kits

Available Thread Sizes	Available End Mill Diameters
1/4-28	5/8 in., 1 in., 1 1/4 in.
10-32	5/8 in., 1 in.
M5x.8	5/8 in.
M6x1	1 in., 1 1/4 in.
M8x1.25	1 1/4 in.

### Carbide Tipped End Mill Tool Kits

Available Thread Sizes	Available End Mill Diameters
1/4-28	5/8 in., 1 in., 1 1/4 in.
M8x1.25	1 1/4 in.



Backed by our Unconditional Lifetime Warranty!

[www.ctconline.com](http://www.ctconline.com)

585-924-5900

CTC offers a wide array of 4-20 mA output solutions for industrial applications. CTC's standard 4-20 mA loop-powered vibration sensors are available with velocity as well as acceleration output measurement options. CTC's loop-powered sensor line also includes a dual output option, with both 4-20 mA output and dynamic output configurations in one sensor. Other options include 24 VDC powered transmitters that power standard IEPE accelerometers and convert the vibration to a powered 4-20 mA signal. These transmitters also offer a 4-20 mA output for temperature when coupled with CTC dual output vibration and temperature sensors.

## Velocity & Acceleration

LP200 Series sensors for velocity and LP300 Series sensors for acceleration come in top or side exit connector, integral cable, and armored integral cable options.



### LP200

Velocity Output,  
Top Exit or Side Exit



### LP300

Acceleration Output,  
Top Exit or Side Exit



### PMX Series

Fiberglass or Stainless  
Steel, Relay and  
Protection Enclosure,  
Input Options: 1 to 4  
Single Output Loop  
Power Sensors



Backed by our Unconditional Lifetime Warranty!

[www.ctconline.com](http://www.ctconline.com)

585-924-5900

**SC300 SERIES**



CTC's SC300 Series Signal Conditioners are fully customizable for your application's needs and price point. All SC300 Series Signal Conditioners provide process control signals to a PLC, DCS, or SCADA system that are proportional to the vibration levels set within the signal conditioner and come with a built in temperature output. The SC310/SC311 offers a single vibration band output. The SC320 series features Dual Band Technology, which allows the user to configure two independent process control output signals from one sensor. This feature allows for the monitoring of two separate vibration/frequency bands with one device, such as both standard vibration monitoring and ultrasonic early bearing fault detection. One band can be configured for monitoring a standard vibration range, and the second band can be configured for monitoring the ultrasound range .

**4-20 mA Enclosures**

CTC's Signal Conditioner Enclosures are turnkey solutions, which come fully populated with signal conditioners, power supply, and terminal blocks for sensor terminations. The signal conditioners are available pre-configured based on customer-specific requirements. Terminal blocks are provided for easy sensor terminations. These terminal blocks are pre-wired to the signal conditioners, and the outputs from the signal conditioners are wired to terminal blocks for integration into PLC/DCS systems.



**SCE SERIES**

Fiberglass or Stainless Steel, Capacity Options:  
1 to 8 SC300 Series Signal Conditioners



**SCD100 SERIES**

Fiberglass, Relay & Protection for  
1 to 4 SC300 Series Signal Conditioners



**Backed by our Unconditional Lifetime Warranty!**

[www.ctconline.com](http://www.ctconline.com)

585-924-5900

CTC offers a complete line of proximity probe systems designed and built to endure the harshest industrial environments. Proximity probes systems are available with probe tip sizes in FFv™ 5 mm, 8 mm, 11 mm, and 25 mm diameters. The variety of probe sizes offered allows accurate and precise machinery measurements for applications involving radial dynamic, axial rotor position, and thermal case expansion measurements.



PROBE TIP OPTIONS

FFv™ 5 mm, 8 mm, 11 mm, 25 mm

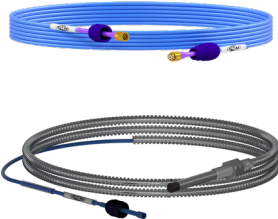
Standard and Armor Cable Options Available

Complete Your Proximity Probe Set



DRIVERS

with BNC for a Fully Buffered Dynamic Voltage Output



EXTENSION CABLES

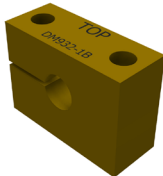
Standard or Armor

Proximity Probe Accessories

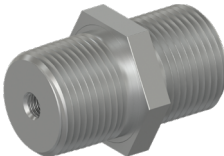


ENCLOSURES

Fiberglass and Stainless Steel Enclosures, 1-6 Channels, Powered and 4-20 mA Options Available



MOUNTING BLOCKS



MOUNTING BUSHINGS



REVERSE MOUNT HOUSING



Backed by our Best-in-Class Warranty!  
[www.ctconline.com](http://www.ctconline.com) 585-924-5900



VIBRATION ANALYSIS HARDWARE



**7939 Rae Boulevard • Victor, NY 14564 USA**

**585-924-5900**

**[www.ctconline.com](http://www.ctconline.com)**

**BACKED BY OUR UNCONDITIONAL  
LIFETIME WARRANTY**