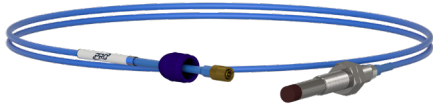


CONNECTION TECHNOLOGY CENTER'S
GUIDE TO
Proximity Probes

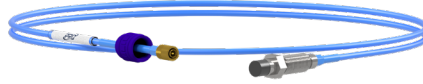


**PROTECTION AND RELIABILITY
INSTRUMENTS**

Standard Mount
Proximity Probes



Reverse Mount
Proximity Probes

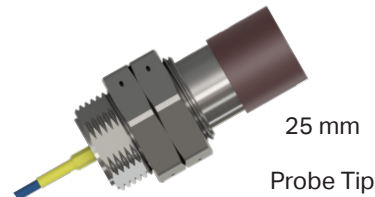
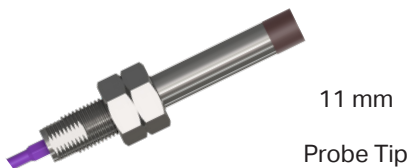
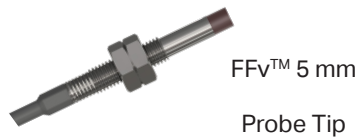


Armor Jacketed
Proximity Probes



We are proud to offer proximity probe systems that meet API Standard 670 constructed with durable stainless steel and backed by our industry leading lifetime warranty on materials and workmanship.

- Multiple case & thread lengths available
- 5 mm Focused Face View (FFv™) probe tip diameter with 1/4-28 or M8x1 threaded body
- 8 mm, 11 mm and 25 mm diameter probe tips
- Probe tip and body sealed to prevent fluid/water ingress (IP68 rated)
- English and metric size case threads
- Can be tuned to different shaft materials



5 & 9 Meter Lengths Available

5 & 7 Meter Lengths for FFv™

Probe Driver

- Flexible system configuration
- DC gap and shaft vibration signals available via buffered BNC jack for analysis
- Mounting options: Panel, DIN rail
- 4-20 mA options available
- Hazardous rated options available



Driver Enclosure

This driver enclosure allows you to protect up to six proximity probe drivers from dirt, dust, oil, and water.

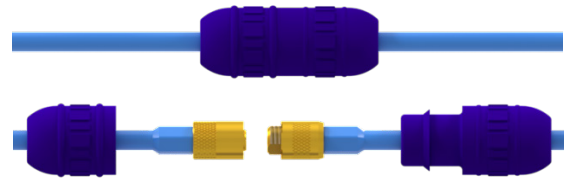
Optional, factory installed DC power supply, prewired to drivers.



Extension Cables



Connector Protector Options:



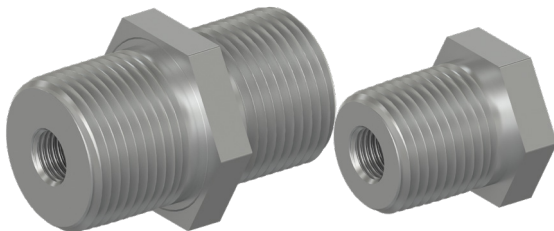
Booted Connector Protector



Self-Adhesive Silicone Tape

PRO extension cables are FEP or armor jacketed and cost effective as a component of a complete vibration monitoring assembly.

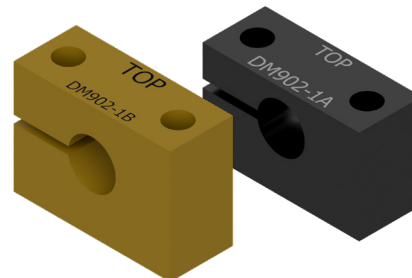
Mounting Hardware



Mounting Bushings

1/2"-14 NPT, 3/4"-14 NPT, 3/4"-14 NPSM

1/4"-28, 3/8"-24, M8 x 1, M10 x 1 Threaded Holes



Clamping

Mounting Blocks (Standard & Metric)

Mounting Blocks are available in aluminum or phenolic materials