



CTC

CONNECTION TECHNOLOGY CENTER

SHORT FORM CATALOG

Who We Are

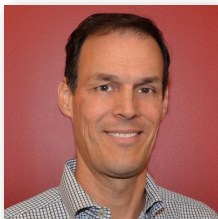
At CTC, we are a family-owned and operated business passionate about providing the highest quality products backed by excellent customer service. We are the industry leader in quick delivery for stock and built-to-order products, and all CTC products are proudly made or assembled in the U.S.A.

What We Do

CTC is the world leader in the design and manufacture of vibration analysis hardware. We serve the industrial condition monitoring market with a comprehensive portfolio of industrial accelerometers, piezo velocity transducers, 4-20 mA vibration sensors, and proximity probes as well as all related mounting hardware, cabling, and junction boxes. Our products enable efficient vibration monitoring for predictive maintenance in a wide variety of industries. Industries served include cement, mining, petrochemical, food and beverage, auto, steel, wind, paper, power generation, water and wastewater treatment, pharmaceutical, hospitals, bottling, and more. We also serve the research and development market with our top-of-the line series of test and measurement accelerometers and related accessories designed for use in laboratory environments. Our mission is to offer the most extensive collection of accelerometers and vibration analysis hardware products, as well as the tools for installation. Our products are compatible with multiple third-party data collectors and online monitoring systems.

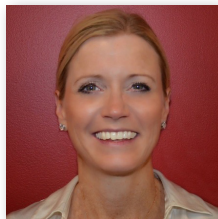
Product Offerings

At CTC, we offer comprehensive product lines to meet your vibration monitoring needs. Our products reflect the input from customers and distributors around the world and are designed and tested to meet the real-world demands of plant environments. We believe our products are the highest quality on the market, which is why we back each product line with industry-leading warranties.



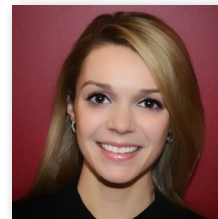
A black ink signature of Todd Cook.

**TODD
COOK**
Co-Owner



A black ink signature of Laura A. Cook.

**LAURA
COOK**
Co-Owner



A black ink signature of Charlotte Cook.

**CHARLOTTE
COOK**
Director of Marketing
and Engineering

CONTENTS

CTC	3
New Product Announcements	3
Multipurpose Accelerometers.....	5
Ultrasound Sensors.....	6
High-Temperature Accelerometers	6
Molded Accelerometers	7
Temperature & Vibration Sensors	8
Hazardous Rated Accelerometers.....	8
Multi-Axial Accelerometers	9
Cables.....	10
Connectors.....	11
Emerson Equivalent & Compatible	13
Adapters & Accessories	14
Junction Boxes.....	16
Mounting Hardware	18
4-20 mA Hardware	21
Signal Conditioners	22
PRO	23
Proximity Probes.....	23
TMP	24
Test and Measurement Products	24

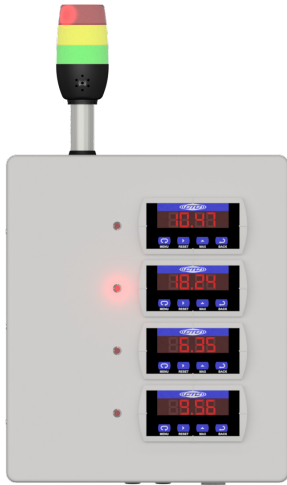


VIBRATION ANALYSIS HARDWARE



TEST & MEASUREMENT PRODUCTS

New to the CTC Family

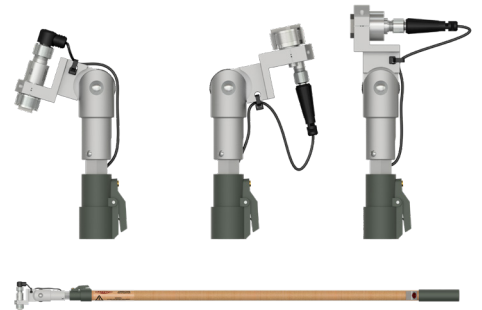


Extended Capacity PXE Series Boxes

- Give analysts better visibility and control of alarm conditions on CTC's relay and display enclosures with new stack lights with optional horn alarm
- Available in two configurations - Single red stack light and tri-color stack light with red, yellow, and green lights that operate independently of each other
- Lights can be pre-wired to flash or stay steadily on when alarm is active, and can be controlled independently of each other using separate relays

VN1000 VibeNavigator Extension Poles

- Available in three lengths: 2 - 4 ft. (0.6 - 1.2 m), 4 - 8 ft. (1.2 - 2.4 m) and 6 - 12 ft. (1.8 - 3.7 m)
- Integrated safety feature design ensures quick disconnection of the pole from the data collector cable in the event of an emergency
- Internally routed cable for improved analyst safety
- Requires customizable mating data collector cables, sold separately

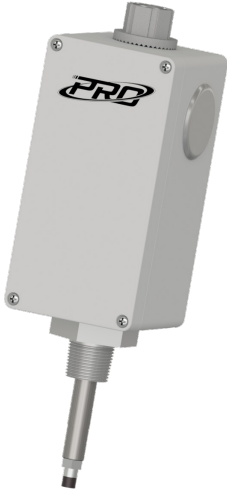


Backed by our industry-leading warranty

www.ctconline.com

585-924-5900

Coming Soon



DM72000 Low-Cost Reverse Mount Proximity Probe Housing

- Easily adjust the gap between the machine shaft and probe or replace an extension cable without shutting down the machine
- Available in top or side exit configurations
- Durable polycarbonate body with 316L stainless steel sleeve that protects proximity probes against harsh conditions
- Crush washer included to seal the sleeve interior between the reverse mount probe and penetration sleeve
- Convenient wrench flats for easy installation



Backed by our industry-leading warranty

www.ctconline.com

585-924-5900

CTC offers a complete line of industrial accelerometers. Our ruggedized industrial accelerometers are available in single axis, biaxial, and triaxial designs. Many configurations allow for either top or side exit options. Side exit configurations are suitable for installations in areas where height is an issue. CTC's industrial accelerometers support a diverse set of applications with sensitivity values ranging from 10 mV/g to 1000 mV/g. Dual output configurations allow for vibration and temperature outputs.

Multipurpose Accelerometer, Top Exit



STANDARD SIZE



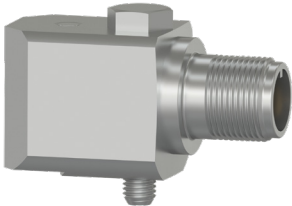
COMPACT SIZE



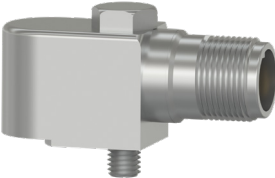
MINI SIZE



Multipurpose Accelerometer, Side Exit



STANDARD SIZE



COMPACT SIZE



MINI SIZE



ACCELEROMETERS

Multipurpose Accelerometer, Integral Cable Options



STANDARD INTEGRAL



ARMORED INTEGRAL



FEP JACKETED



HEAVY DUTY ARMORED

ULTRASOUND

Ultrasound Sensors



UEB332/UEA332

Dynamic IEPE vibration and ultrasound accelerometer with high amplitude resonance peak for stress wave measurements

Sensitivity: 100 mV/g
Resonant Peak: 42 kHz \pm 2 kHz

HIGH-TEMPERATURE

High-Temperature Resistance Accelerometers



AC207/AC208

100 mV/g
Max Temp: 325 °F (162 °C)



TXEA331-HT

100 mV/g
Triax Sensor
Max Temp: 325 °F (162 °C)



TR207-M12/TR208-M12

100 mV/g
RTD Sensors
Max Temp: 325 °F (162 °C)



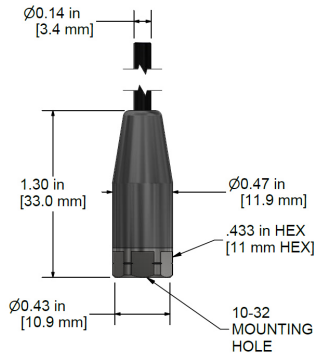
Backed by our industry-leading warranty

www.ctconline.com

585-924-5900

Cost Effective Molded Sensors

featuring a fully-molded design



These miniature sensors are ideal for applications with limited clearance, limited mounting surface space, or submersible applications. The minimal form factor and excellent frequency response allow this sensor to be used in a wide variety of applications.



MCB211
High Frequency
10 mV/g

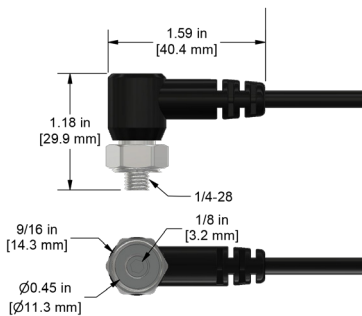


MEB210
General Purpose
100 mV/g



MEB211
High Frequency
100 mV/g

Low-Profile Molded Sensors



CTC's innovative solution for space-constrained applications requiring permanent mounting, featuring integrated rotating mounting base.



MEB360
Premium,
Low Profile
100 mV/g



MEB361
Low Cost,
Low Profile
100 mV/g



MCB360
Premium,
Low Profile
10 mV/g



MCB361
Low Cost,
Low Profile
10 mV/g



Backed by our industry-leading warranty

www.ctconline.com

585-924-5900

Dual Output Temperature and Vibration Sensors



TA202
100 mV/g
10 mV/°C
Temp Range:
-40 °F to 250 °F
(-40 °C to 121 °C)



TA204
100 mV/g
10 mV/°C
Temp Range:
-40 °F to 250 °F
(-40 °C to 121 °C)



TR102-M12A
100 mV/g
PT100 RTD
Temp Range:
-40 °F to 250 °F
(-40 °C to 121 °C)

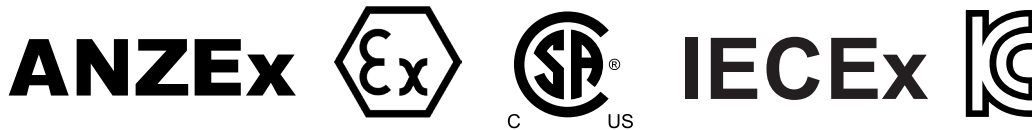


TR104-M12A
100 mV/g
PT100 RTD
Temp Range:
-40 °F to 250 °F
(-40 °C to 121 °C)

Hazardous Rated Accelerometers

CTC offers a variety of single axis, biaxial, triaxial, dual output, and 4-20 mA loop power vibration sensors certified for the most popular hazardous ratings, including the following.

Hazardous Ratings



Backed by our industry-leading warranty

www.ctconline.com

888-924-5900

Dual Output Triaxial Accelerometers



TXEA331-TA

Dual Output Triax
Acceleration &
Temperature
100 mV/g
10 mV/°C



TXEA331-VT

Dual Output Triax
Velocity &
Temperature
100 mV/in/sec
10 mV/°C



TXFA331-TA

Dual Output Triax
Acceleration &
Temperature
500 mV/g
10 mV/°C



TXFA331-VT

Dual Output Triax
Velocity &
Temperature
500 mV/in/sec
10 mV/°C

Other Popular Triaxial Accelerometers



AC115

Low Cost
Standard Size
100 mV/g



TREA330

Premium
Compact Size
100 mV/g



TCEB331

Premium
Circular Shape
100 mV/g



TXFA331

Premium
Low Frequency
500 mV/g

Popular Biaxial Accelerometers



AC119

Low Cost
Biaxial with X & Z Axis
100 mV/g



AC979

Intrinsically Safe
Biaxial with X & Z Axis
100 mV/g



BSFA333-IV

Inverse Voltage
Biaxial with X & Z Axis
100 mV/g

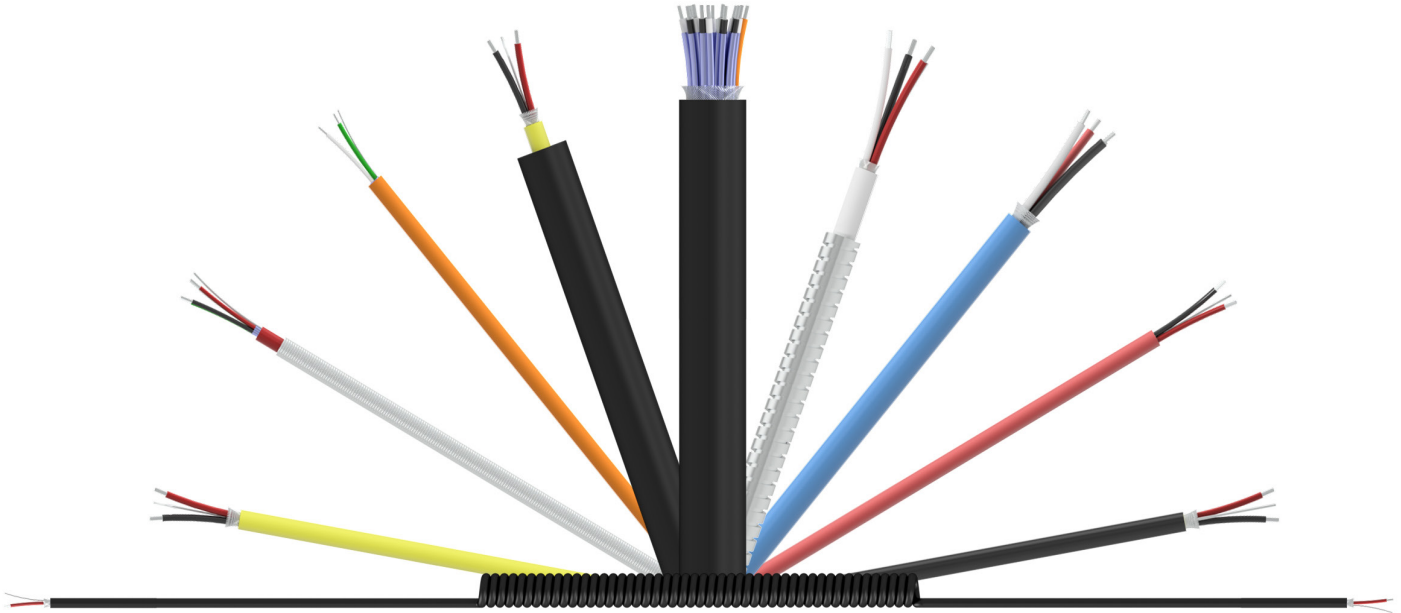


Backed by our industry-leading warranty

www.ctconline.com

585-924-5900

CTC Offers a Variety of Cable Options for All Application and Environmental Criteria



JACKET TYPES

- Fluorinated Ethylene Propylene (FEP)
- Polyurethane
- Lightweight Polyurethane
- PVC
- Thermoplastic Elastomer (TPE)
- Low Smoke Zero Halogen

ARMOR OPTIONS

- Stainless Steel Braided Sheathing
- Stainless Steel Armor
- Hydraulic Hose Armor

CONDUCTOR OPTIONS

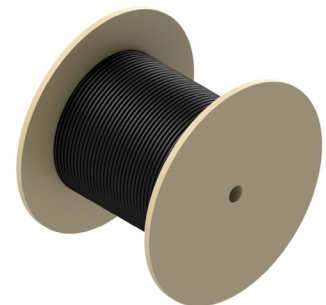
- 2 Conductor
- 3 Conductor
- 4 Conductor
- 6 Conductor

HAZARDOUS ZONE OPTIONS

- Class 1 Division 2 Approved Cables

LOW COST CABLE REELS

Bulk Cable Options Available in 1000 ft Reels



Backed by our industry-leading warranty

www.ctconline.com

585-924-5900

CTC Offers a Variety of Standard and Specialty Connectors for Every Possible Application

CTC sensor connectors support temperatures ranging from -58 °F to 325 °F (-58 °C to 162 °C). A wide selection of connectors supporting IP (Ingress Protection) ranging from IP66 to IP69 is available.

A SERIES: MIL STYLE (C-5015) COMPATIBLE CONNECTOR



Connector Options

- Straight or Right Angle Connectors
- Hydraulic Hose Sleeve Available
- Available in 2 and 3 Live Socket Configurations

Material Options

- Polycarbonate
- Polyurethane
- Nylon
- PPS

J SERIES: MINI-MIL STYLE CONNECTOR



Connector Options

- Straight Connector
- Strain Relief Available
- Class 1 Division 2 Rated
- Available in 2 and 4 Live Socket Configurations

Material Options

- Polycarbonate
- Nylon
- Polyurethane
- Viton®
- PPS

K SERIES: MIL STYLE (C-5015) COMPATIBLE CONNECTOR



Connector Options

- Straight Connector
- Strain Relief
- Grounded Backshell
- Available in 2 and 3 Live Socket Configurations

Material Options

- Polyurethane

M SERIES: M12 MOLDED CONNECTOR



Connector Options

- Straight Connector
- Strain Relief Available
- Available in 2, 3, 4, and 5 Live Socket Configurations

Material Options

- Nylon
- Polycarbonate
- Polyurethane

V SERIES: VITON® PROTECTIVE BOOT COVER



Connector Options

- Straight Connector
- Available in 2, 3, or 4 Live Socket Configurations

Material Options

- Viton® Seal with
 - Nylon Insert Option
 - PPS Insert Option

Many other options for cabling and connectors are available. Please [visit our website](#) for more details.



Backed by our industry-leading warranty

www.ctconline.com

585-924-5900

Data Collector Cord Sets

CTC offers a variety of OEM replacement data collector cables and portable cable options for all major vibration analyzer manufacturers. Data collector cables are available in both coiled and straight cable options. Replacement cable assembly and adapters are available for every major data collector including:

ACOEM, ADASH Ltd., AES Reliability, Azima/Symphony Industrial AI, Betavib, Bently Nevada/Baker Hughes/Commtest, CEMB, Emerson/CSI, Entek/Rockwell, Erbesed, Pruftechnik, Schenk, SDT, SEMAPI, SKF, SPM, and Windrock.

Popular Data Collector Connectors



EMERSON/CSI

C555

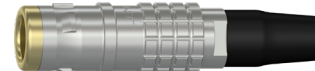
Channel A Acceleration
Input to Emerson 2130 &
2140



ACOEM

C494

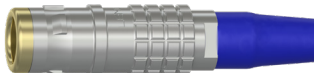
Single Channel
Acceleration Input for
Falcon Data Collectors



**BENTLY NEVADA/BAKER
HUGHES/COMMTEST**

C416

Triaxial Acceleration Input
X, Y and Z for VB Series



ENTEK/ROCKWELL
C22

Single Channel
Acceleration Input for
dataPAC



PRUFTECHNIK
C618

Single Channel IEPE
Acceleration Input for
VIBXpert II



SKF
C66

Single Channel
Acceleration Input for
CMXA and DLI/DCA Series



Backed by our industry-leading warranty

www.ctconline.com

585-924-5900

CTC is proud to offer a wide selection of vibration analysis hardware that is compatible with Emerson/CSI's broad range of data collectors.

Available Product Types



Accelerometers

Equivalent and compatible offerings



Cable Adapters

Equivalent and compatible offerings



Cable Assemblies

Equivalent Offerings



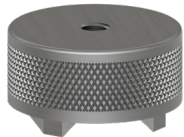
Data Collector Connectors

Compatible offerings



General Purpose Adapters

Compatible offerings



Mounting Hardware

Compatible offerings



VibeNavigator

Portable data collection extension pole for A0643TX



Scan to view the complete catalog.

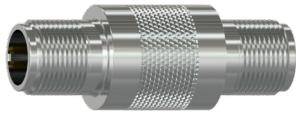


Backed by our industry-leading warranty

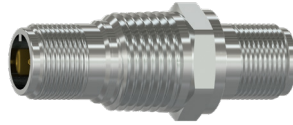
www.ctconline.com

585-924-5900

Popular Adapters



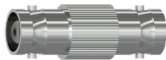
CB901-1A
2 Pin MIL to 2 Pin MIL,
In-Line Feedthrough,
316L Stainless Steel



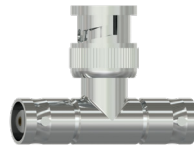
CB903-1A
2 Pin MIL to 2 Pin MIL,
Bulkhead Feedthrough,
0.5 in. (12.7 mm) NPT
316L Stainless Steel



CB908-1A
2 Pin MIL (316L Stainless
Steel) to BNC Plug Adapter
(Nickel-Plated Brass), with
Overmolded Reinforcement



CB910-1A
In-Line BNC
Jack Adapter,
Nickel-Plated Brass



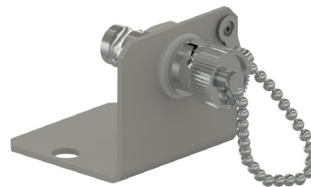
CB911-1A
BNC "T" Adapter,
Nickel-Plated Zinc



CB911-3A
In-Line BNC
Plug Adapter,
Nickel-Plated Brass



CB912-1A
2 Socket MIL (Black Zinc
Alloy) to BNC Plug Adapter
(Nickel-Plated Brass), with
Overmolded Reinforcement



CB917-1A
BNC Connector
(Nickel-Plated Brass) with
Mounting Bracket (304
Stainless Steel), Includes
BNC Cap Cover and Chain



EMPP
Molded BNC Jack
Connector with Nylon
Threaded Protector

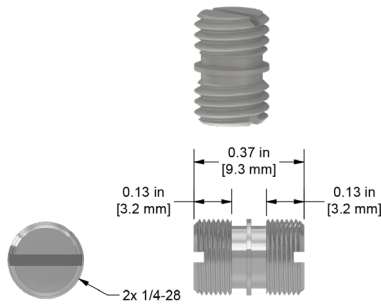


Backed by our industry-leading warranty

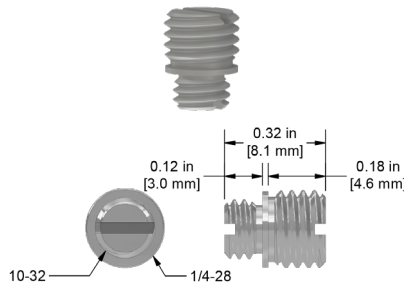
www.ctconline.com

585-924-5900

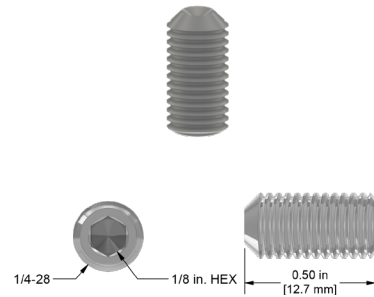
Specialty Mounting Adapters & Studs



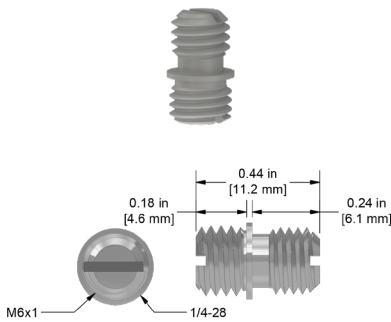
MH108-1B
1/4-28 to 1/4-28
Mounting Stud
Stainless Steel



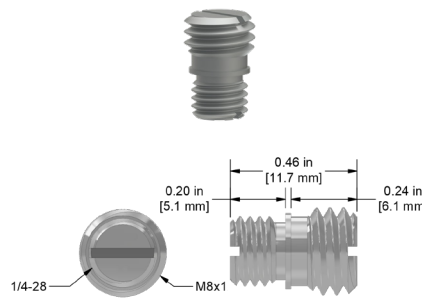
MH108-3B
1/4-28 to 10-32
Adapter Stud
Stainless Steel



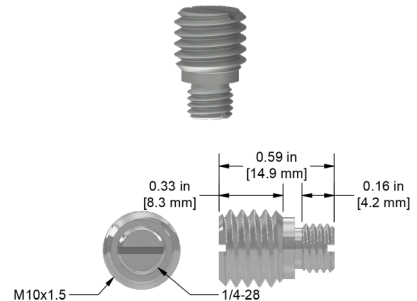
MH108-4B
1/4-28
Mounting Screw
Stainless Steel



MH108-5B
1/4-28 to M6x1
Adapter Stud
Stainless Steel



MH108-6B
1/4-28 to M8x1.25
Adapter Stud
Stainless Steel



MH108-7B
1/4-28 to M10x1.25
Adapter Stud
Stainless Steel

Empty Enclosures & Replacement Boards



JBA0608-FG
Empty Fiberglass
Enclosure
6 in. x 8 in. x 4 in.



JBA0608-SS
Empty Stainless
Steel Enclosure
6 in. x 8 in. x 4 in.



JB900 SERIES
Single Axis,
Multichannel Switch
Box PC Boards



Backed by our industry-leading warranty

www.ctconline.com

585-924-5900

At CTC, we offer the widest variety of junction boxes in the world. Our junction box solutions allow for the monitoring of remotely mounted vibration sensors, which would be otherwise restricted to human access due to safety considerations. Also offered is a selection of low-cost cable termination boxes that allow multiple measurement points to be routed to a single location to gather data. Many CTC junction boxes offer continuous output options for direct interface to online monitoring systems.

Premium JB Series Switch Boxes

Fully featured NEMA 4X (IP66) rated vibration junction box with IEPE sensor condition indicator lights and convenient interface with fold-forward panel for easy wiring. Compatible with single axis, biaxial, and triaxial inputs.



**JB100/JB200
STANDARD SIZE**

Fiberglass or Stainless Steel, Input Options: 4 to 12 Single Output Sensors



**JB100/JB200
EXTENDED CAPACITY**

Fiberglass or Stainless Steel, Input Options: 24 to 48 Single Output Sensors



**JB300 SERIES
SLOPE TOP**

Stainless Steel Slope Top, Input Options: 4 to 12 Single, Dual, or Triaxial Output Sensors

Legacy Switch Boxes



**SB102/SB202/SB262
STANDARD SIZE**

Fiberglass, Stainless Steel, or Stainless Steel Slope Top, Input Options: 4 to 12 Single Output Sensors



**SB142/SB242/SB282
STANDARD SIZE**

Fiberglass, Stainless Steel, or Stainless Steel Slope Top, Input Options: 4 to 8 Dual Output Sensors



SSB-MODX

Single Axis Switch Module, DIN Rail Mountable, Input Options: 4 to 12 Single Output Sensors



Backed by our industry-leading warranty
www.ctconline.com

585-924-5900

Cable Termination and Enclosed BNC Connection Boxes



CT101

Cable Termination Boxes, Input Options: 1 to 4 Single Output Sensors



MMX-MOD3

DIN Rail Mountable, MAXX Box BNC Connection Module, 3 BNC Jacks



MX102/MX202

Fiberglass or Stainless Steel MAXX Boxes, Input Options: 1 to 12 Single Output Sensors

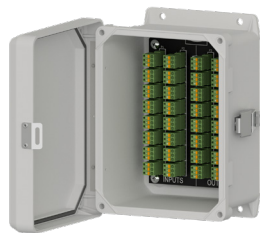


MX502

Aluminum Mini-MAXX Boxes, Input Options: 1 to 4 Single Output Sensors

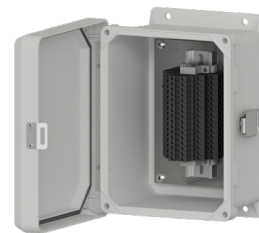
Cable Reduction Boxes

CTC cable reduction boxes reduce the input cabling of up to 16 individual sensors into one multiconductor cable. Utilizing a cable reduction box can significantly reduce cabling costs for applications with long cable runs. Fiberglass and stainless steel options are available.



CR102/CR202

Fiberglass or Stainless Steel, Input Options: 8, 12, and 16 Single Output Sensors
-58 °F to 180 °F
(-50 °C to 82 °C)



CRHT102/CRHT202

Fiberglass or Stainless Steel, High Temperature, Input Options: 12 and 16 Single Output Sensors
-40 °F to 212 °F
(-40 °C to 100 °C)



Backed by our industry-leading warranty

www.ctconline.com

585-924-5900

CTC offers a variety of adhesive and stud mounted sensor mounting pads. Magnet mounting pad options for portable field applications are also available, including flat and two rail mounting configurations. Additionally, we offer specialty mounting accessories for fin-cooled motors as well as a variety of mounting probe tips, which allow access to traditionally hard-to-reach bearing locations. Visit our website for a complete list of our mounting hardware solutions.

Rare Earth Magnetic Bases

made from Neodymium Iron Boron



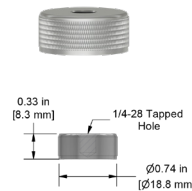
MH103-1B

Flat Surface,
Pull Strength:
40 lbs/18 kg



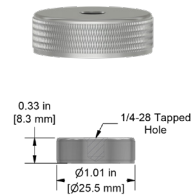
MH104-1B

Flat Surface,
Pull Strength:
60 lbs/27 kg



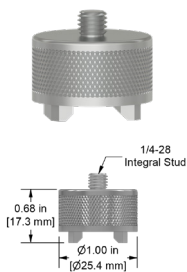
MH110-1A

Low Profile
Flat Surface,
Pull Strength:
21 lbs/10 kg



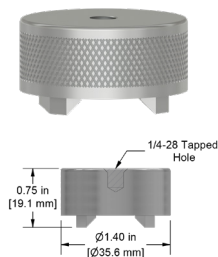
MH111-1A

Low Profile
Flat Surface,
Pull Strength:
24 lbs/11 kg



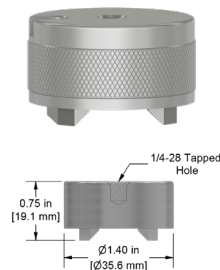
MH112-1A

Multipurpose,
Pull Strength:
30 lbs/14 kg



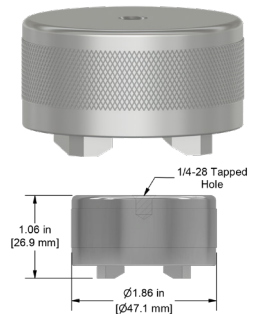
MH114-3A

Multipurpose,
Pull Strength:
50 lbs/23 kg



MH114-3T

Multipurpose,
Pull Strength:
50 lbs/23 kg



MH115-2A

Multipurpose,
Pull Strength:
95 lbs/43 kg



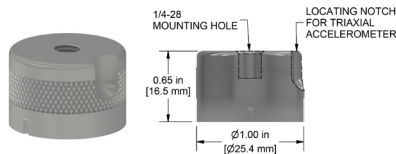
Backed by our industry-leading warranty

www.ctconline.com

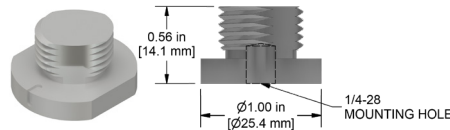
585-924-5900

Accelerometer Quick Disconnects

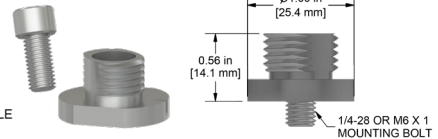
CTC's quick disconnects are ideally suited for triaxial sensor use. The permanently mounted stud creates a consistent mounting location for portable routes. The receptacle features a triaxial locating notch and ¼ turn engagement onto the stud, ensuring the sensor is oriented in the same position for every reading.



MH107-1A

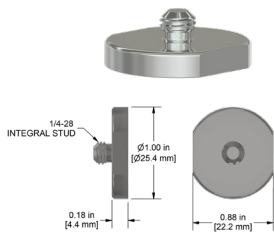


MH107-1B

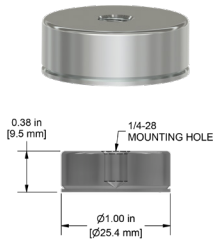


MH107-2B

Mounting Pads/Magnet Targets



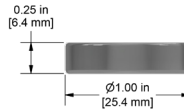
MH101-1B



MH130-1A

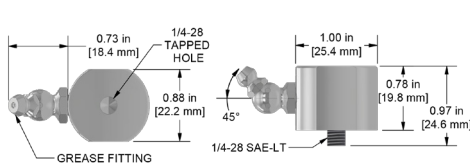


MH130-1T

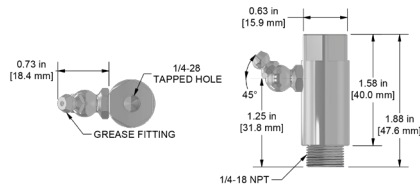


MH133-1A

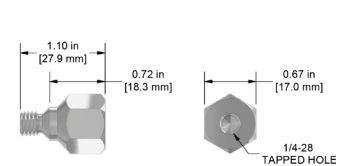
Zerk and Specialty Mounting Adapters



MH134-1B
45° Zerk Adapter
¼ - 18 NPT
Mounting Thread



MH134-4B
Hex Head 45° Zerk Adapter
¼-18 NPT
Mounting Thread



MH143-1A
Hex Head Mounting Stud
for Accelerometers,
SPM Compatible



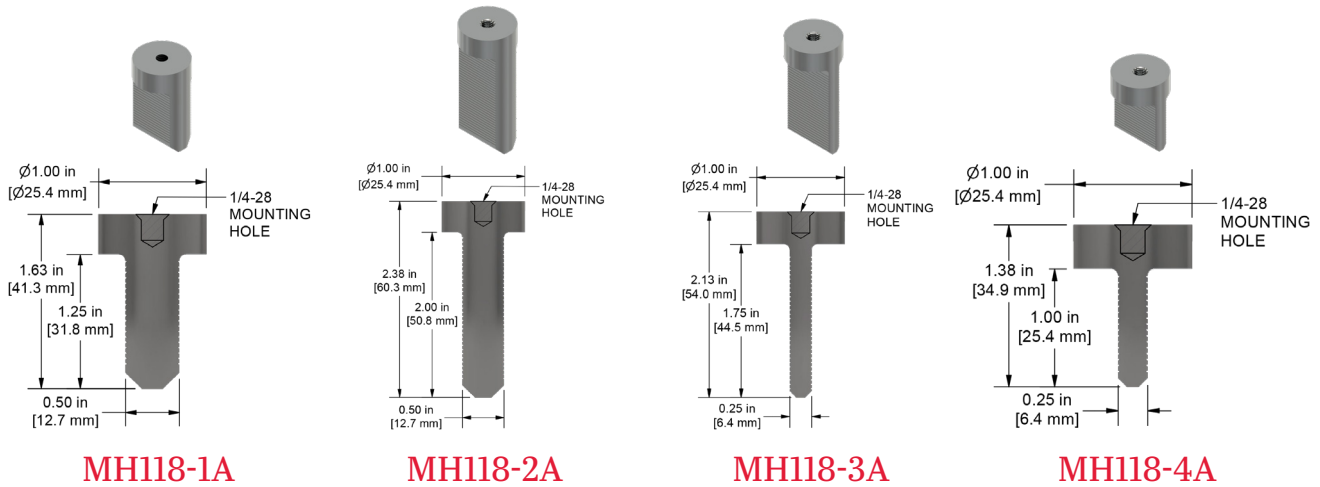
Backed by our industry-leading warranty

www.ctconline.com

585-924-5900

Motor Fin Probe Pads

Take measurements from hard-to-reach places.



MH118-1A

MH118-2A

MH118-3A

MH118-4A

Our fin mount probes are perfect for narrow measurement points in motors, turbines, and other machinery. Fin mounts can be used for portable route measurements or permanently mounted accelerometers.

Accelerometer Installation Tool Kit



MH117 SERIES

Spot Face and Pilot Hole Drill in One Operation.
Option for Taps and Ratcheting Tap Handle Included.

High Speed Steel End Mill Tool Kits

Available Thread Sizes

1/4-28

10-32

M5x.8

M6x1

M8x1.25

Available End Mill Diameters

5/8 in., 1 in., 1 1/4 in.

5/8 in., 1 in.

5/8 in.

1 in., 1 1/4 in.

1 1/4 in.

Carbide Tipped End Mill Tool Kits

Available Thread Sizes

1/4-28

M8x1.25

Available End Mill Diameters

5/8 in., 1 in., 1 1/4 in.

1 1/4 in.



Backed by our industry-leading warranty

www.ctconline.com

855-924-5900

CTC offers a wide array of 4-20 mA output solutions for industrial applications. CTC's standard 4-20 mA loop-powered vibration sensors are available with velocity as well as acceleration output measurement options. CTC's loop-powered sensor line also includes a dual output option, with both 4-20 mA output and dynamic output configurations in one sensor. Other options include 24 VDC powered transmitters that power standard IEPE accelerometers and convert the vibration to a powered 4-20 mA signal. These transmitters also offer a 4-20 mA output for temperature when coupled with CTC dual output vibration and temperature sensors.

Velocity & Acceleration

LP200 Series sensors for velocity and LP300 Series sensors for acceleration come in top or side exit connector, integral cable, and armored integral cable options.



LP200
Velocity Output,
Top Exit or Side Exit



LP300
Acceleration Output,
Top Exit or Side Exit



PMX Series
Fiberglass, Relay and
Display Enclosure, Input
Options: 1 to 4 Single
Output Loop Power
Sensors



Backed by our industry-leading warranty

www.ctconline.com

585-924-5900

CTC SIGNAL CONDITIONERS



CTC's SC300 Series Signal Conditioners are fully customizable for your application's needs and price point. All SC300 Series Signal Conditioners provide process control signals to a PLC, DCS, or SCADA system that are proportional to the vibration levels set within the signal conditioner and come with a built in temperature output. The SC310/SC311 offers a single vibration band output. The SC320 series features Dual Band Technology, which allows the user to configure two independent process control output signals from one sensor. This feature allows for the monitoring of two separate vibration/frequency bands with one device, such as both standard vibration monitoring and ultrasonic early bearing fault detection. One band can be configured for monitoring a standard vibration range, and the second band can be configured for monitoring the ultrasound range. Limited to 100 mV/g accelerometers, the SC150 provides over \$100 in savings over the SC300 Series without compromising on its excellence.

4-20 mA Enclosures

CTC's Signal Conditioner Enclosures are turnkey solutions, which come fully populated with signal conditioners, power supply, and terminal blocks for sensor terminations. The signal conditioners are available pre-configured based on customer-specific requirements. Terminal blocks are provided for easy sensor terminations. These terminal blocks are pre-wired to the signal conditioners, and the outputs from the signal conditioners are wired to terminal blocks for integration into PLC/DCS systems.



SCE SERIES

Fiberglass or Stainless Steel, Capacity Options:
1 to 8 SC Series
Signal Conditioners



SCD100 SERIES

Fiberglass, Relay & Protection for
1 to 4 SC Series
Signal Conditioners



PXD SERIES

Fiberglass, Relay & Protection for
1 to 4 PRO Line
Proximity Probe Drivers



Backed by our industry-leading warranty

www.ctconline.com

585-924-5900

CTC offers a complete line of proximity probe systems designed and built to endure the harshest industrial environments. Proximity probes systems are available with probe tip sizes in FFv™ 5 mm, 8 mm, 11 mm, and 25 mm diameters. The variety of probe sizes offered allows accurate and precise machinery measurements for applications involving radial dynamic, axial rotor position, and thermal case expansion measurements.

PROBE TIP OPTIONS

FFv™ 5 mm, 8 mm, 11 mm, 25 mm

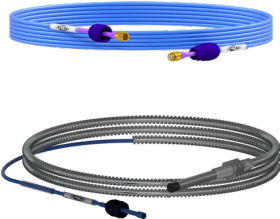
Standard and Armor Cable Options Available



Complete Your Proximity Probe Set



DRIVERS
with BNC for a Fully Buffered Dynamic Voltage Output



EXTENSION CABLES
Standard or Armor

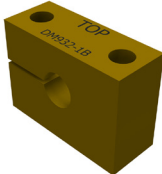


NPT PRESSURE SEAL FITTING
Standard or Armor Single or Dual Sided

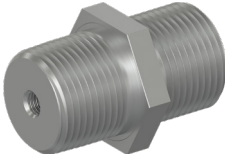
Proximity Probe Accessories



ENCLOSURES
Fiberglass and Stainless Steel Enclosures, 1-14 Channels, Powered and 4-20 mA Options Available



MOUNTING BLOCKS



MOUNTING BUSHINGS



REVERSE MOUNT HOUSING
Top or Side Exit



Backed by our industry-leading warranty
www.ctconline.com 585-924-5900

TMP products, are line of lightweight and low profile test and measurement instruments, are thoughtfully engineered to provide efficient and reliable research-grade data measurements at the industry’s lowest price point, so you can save money without sacrificing quality or durability.

Test and Measurement Accelerometers

Our lightweight, low profile test and measurement accelerometers are suitable for many laboratory testing and general purpose applications. Constructed with titanium cases and having frequency ranges up to 30 kHz, TMP sensors are among the highest quality vibration sensors in the world.



TEA110

0.81 in. (20.6 mm)
Height,
0.35 oz. (10 g),
100 mV/g,
±10%



TEB110

1.05 in. (26.7 mm)
Height,
0.35 oz. (10 g),
100 mV/g,
±10%



TCA110

0.81 in. (20.6 mm)
Height,
0.35 oz. (10 g),
10 mV/g,
±10%

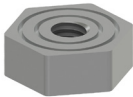


TCB110

1.05 in. (26.7 mm)
Height,
0.35 oz. (10 g),
10 mV/g,
±10%

Test and Measurement Mounting Bases

Our lightweight, low profile mounting bases are designed for superior performance in research and development applications.



MHT130

Isolated Mounting Pad,
0.5 in (12.7 mm) OD, 0.2 in. (4.9 mm) Height

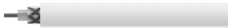


MHT154

Flat Surface Mounting Magnet,
0.58 in. (14.7 mm) OD, 0.33 in. (8.38 mm) Height,
15 lbs (6.8 kg) Pull Strength

Test and Measurement Cables and Connectors

We also offer a variety of TMP-compatible coaxial cabling and connectors.



TMC01

White FEP Jacket



TMC02

Black PVC Jacket



TMC03

Green PTFE Jacket



EC

BNC Jack Connector



FC

BNC Plug Connector



MD10

10-32 Male Connector



Backed by our industry-leading warranty

www.ctconline.com

585-924-5900



7939 Rae Boulevard • Victor, NY 14564 USA

585-924-5900

www.ctconline.com